

JEFFERSON COUNTY COMMISSION

MUNICIPAL SEPARATE STORM SEWER SYSTEM

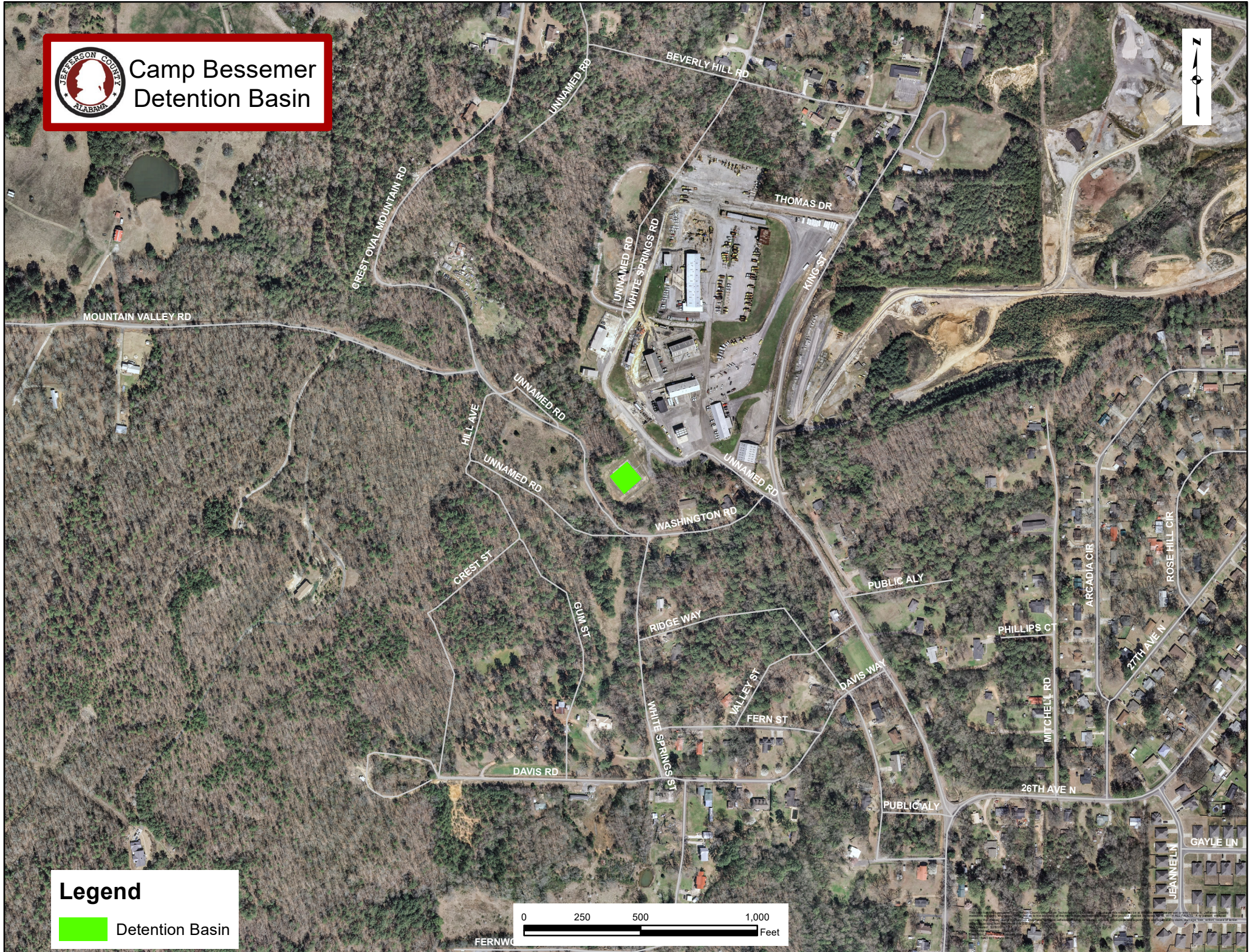
PERMIT NUMBER: ALS000001

APPENDIX A



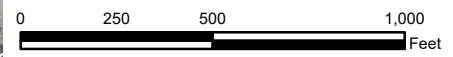


Camp Bessemer Detention Basin



Legend

 Detention Basin



Map data © OpenStreetMap contributors, Imagery © Mapbox, Jefferson County GIS Department, 2023

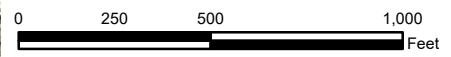


Camp Ketona Detention Basin



Legend

 Detention Basin





Retention/Detention Inspection Form

Site:	Date:	Inspector:
-------	-------	------------

CRITERIA	SAT/UNSAT/NA	COMMENTS
1. FOREBAY: >50% filled with sediment = UNSAT and note ATTN REQUIRED		
2. INLETS: Note signs of erosion and/or low spots		
3. OUTLETS: Note signs of erosion and/or low spots		
4. PRINCIPAL SPILLWAY: Note signs of erosion, obstructions, seeping		
5. EMERGENCY SPILLWAY: Note signs of erosion, obstructions		
6. BASIN BOTTOM AND SIDE SLOPES: Note erosion, ground cover, woody vegetation		
7. SAFETY DEVICES: Fences, gates, locks, etc.		
8. EMBANKMENTS: Note adequate ground cover, signs of erosion, wood vegetation, low spots, cracking, animal burrows, signs of instability		
9. STRUCTURAL COMPONENTS: Note signs of settling, cracking, bulging, misalignment, or deterioration		
10. ROUTINE MAINTENANCE: Does facility require mowing, trash pickup?		
11. CONDITION OF AQUATIC ENVIRONMENT: Note excessive algae, dominance of one vegetative type		
12. VEGETATION: Is vegetation healthy and providing appropriate cover?		
13. STORAGE VOLUME: Note evidence of conditions that significantly reduce storage volume		
14. DEBRIS/SEDIMENT ACCUMULATION: Note evidence of trash, floating debris, or sediment		
15. STANDING WATER: Is there standing water in appropriate areas? Inappropriate areas?		

JEFFERSON COUNTY COMMISSION

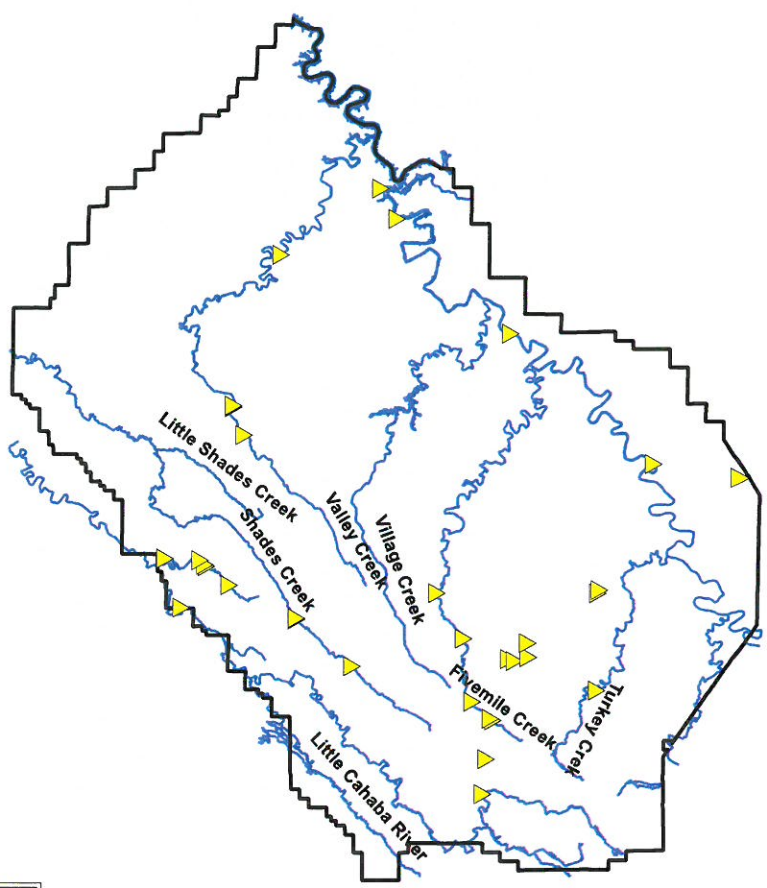
MUNICIPAL SEPARATE STORM SEWER SYSTEM

PERMIT NUMBER: ALS000001



APPENDIX B



Major Outfalls and Waters of the State



Legend

-  Jeff_Co_major_outfalls
-  Rivers & Creeks



Jefferson County
Development Services

This map has been prepared by Jefferson County Land Planning and Development Services. It is not intended to be used as a legal document. It is the responsibility of the user to verify the accuracy of the information shown on this map. Jefferson County Land Planning and Development Services is not responsible for any errors or omissions on this map. Jefferson County Land Planning and Development Services is not responsible for any damages, including consequential damages, arising from the use of this map. © 2010 Jefferson County Land Planning and Development Services.

Jefferson County Major Outfalls Lat and Long

LATITUDE	LONGITUDE
33.759916	-86.913483
33.645267	-87.039348
33.642592	-86.727743
33.647132	-86.725668
33.658086	-86.729686
33.657983	-86.742977
33.714216	-86.790032
33.715617	-86.79303
33.585421	-86.791247
33.621044	-86.598641
33.629784	-86.669103
33.627402	-86.670845
33.613045	-86.687099
33.606354	-86.747627
33.517747	-86.721912
33.379296	-86.779097
33.366833	-86.826326
33.366812	-86.826358
33.418101	-86.800366
33.399803	-86.818719
33.398791	-86.82016
33.398647	-86.820223
33.394869	-86.824271
33.394672	-86.824309
33.472389	-86.767343
33.472595	-86.768085
33.472545	-86.768629
33.461148	-87.115826
33.430984	-86.9438
33.422263	-86.970324
33.422291	-86.97068
33.422357	-86.971048
33.422396	-86.971709
33.712974	-86.696861
33.623999	-86.63214
33.554796	-87.149639
33.54156	-87.178756
33.712975	-86.696861
33.827975	-86.900253

JEFFERSON COUNTY COMMISSION

MUNICIPAL SEPARATE STORM SEWER SYSTEM

PERMIT NUMBER: ALS000001

APPENDIX C



ARTICLE 11	
STORM WATER DETENTION	119
11.00 General	119
ARTICLE 12	
SURVEYS	127
12.10 General Requirements	127
12.20 Monument Location and Types	127
12.30 Survey Records	127
12.40 Construction Layout	127
ARTICLE 13	
EROSION AND SEDIMENTATION (Amended 12/8/2009)	129
13.10 General	129
13.11 Authority and Jurisdiction Specific to this Article	129
13.12 Definitions	129
13.20 Administration	133
13.21 Registration Required	133
13.22 Exceptions	134
13.30 Application and Registration Procedures	134
13.31 Basic Control Objectives	136
a. Identify Critical Areas	136
b. Limit Exposed Areas	136
c. Limit Time of Exposure	136
d. Control Surface Water	136
e. Control Sedimentation	136
f. Manage Storm Water Runoff	136
g. Low-Impact Development Techniques	136
13.32 Mandatory Standards for the Erosion and Sedimentation Control Plan, including	136
c. Design and Performance Standards	137
d. Additional Standards Regarding Lakes and Natural Watercourses, Stream Banks and Channels	137
e. Standards Related to Off-Site Activities	138
13.33 Application Requirements	138
13.40 Commencement of Land-Disturbing Activities: Responsibilities of the Property Owner/Developer	140
13.50 Monitoring and Inspection of Land-Disturbing Activities: Authority of the Department of Land Planning & Development Services	142
13.51 Surety Requirements	143
13.60 Enforcement and Abatement	144
13.61 Penalties	146
13.62 Appeals of Penalties	147
13.70 Establishment and Authority of the Flood Hazard Appeal Board	147
13.71 Appeals of the Requirements of this Article	148
13.72 Appointments, Meetings and Procedures of the Flood Hazard Appeal Board	149
13.80 Repeal of Existing or Prior Ordinances, Regulations and Requirements	150
APPENDIX	151

ARTICLE 13

EROSION AND SEDIMENTATION

13.10 General.

All persons engaged in any land-disturbing activities shall take all reasonable measures to protect all public and private property, including roadways and waterways, from damage by such activities. However, that notwithstanding, there are certain specific measures that must be taken any time there is significant disturbance of the land; and the following provisions set forth the requirements that shall accordingly be imposed on persons engaged in land disturbing activities which necessitate planning and implementation of effective erosion and sedimentation controls for development sites.

The following provisions and requirements will not apply to activities listed as being exempt in Section 13.22 of this Article.

13.11 Authority and Jurisdiction Specific to this Article.

Whereas ADEM, pursuant to the authority delegated to it under the Clean Water Act, 33 u.s.c. Section 1251, *et seq.*, has required the County to obtain a NPDES permit for storm water discharges from the MS4, effective March 1, 1995, the County is subject to the federal storm water laws and regulations contained in 33 U.S.C. 1342 (P) and 40 C.F.R. 122.26, and is required to adopt a local erosion control ordinance. Act No. 95775 of the Alabama State Legislature (Code of Alabama 1975, § 11-89C 1-14) and other provisions of the Code of Alabama 1975 grant the authority to adopt such ordinances to the governing bodies of counties.

13.12 Definitions.

For the purposes of this Article, the following words and terms shall have the meaning assigned to them in this section.

Accidental Discharge - a discharge prohibited by this Article into the MS4 or community water which occurs by chance and without planning or consideration prior to occurrence.

Adverse Impact - any deleterious effect on waters or wetlands, including their quality, quantity, surface area, species composition, aesthetics or usefulness for human or natural uses which are or may potentially be harmful or injurious to human health, welfare, safety or property or to biological productivity, diversity or stability, or which would unreasonably interfere with the enjoyment of life or property.

Agriculture - activities undertaken on land for the production of plants, crops, and animals which are useful to man.

Alabama Department of Environmental Management (herein abbreviated as "**ADEM**") - the State of Alabama regulatory agency, created under Code of Alabama 1975, § 22-22A-1, *et seq.*, responsible for administering and enforcing the storm water laws of the United States of America and the State of Alabama.

Applicant - any person, firm, corporation or agency who executes the necessary forms to procure approval of an erosion and sedimentation control plan from the County.

Best Management Practices (herein abbreviated as "**BMPs**") – activities, prohibitions of practices, maintenance procedures and management practices designed to prevent or reduce the pollution of waters to the MS4. Best Management Practices also include treatment requirements, operating procedures and practices to control facility site runoff, spillage or leaks, sludge or waste disposal or drainage from raw material storage and construction sites.

Clean Water Act (herein abbreviated as "**CWA**") - the federal act (33 U.S.C. § 1251 through § 1387) which was formerly referred to as the Federal Water Pollution Control Act and Federal Water Pollution Control Act Amendments of 1972, Public Law 92-500, as amended by Public Law 95-217, Public Law 95-576, Public Law 6-483 and Public Law 97-117, 33 U.S.C. § 1251-1387.

Clearing - the removal from the land of trees, shrubs, grass, brush and/or other varied ground cover and vegetation which, in its undisturbed state, is useful for windbreaks, water retention and the maintenance of topsoil (but not including the ordinary mowing of grass or the maintenance of cleared areas).

Community Waters - any or all rivers, streams, creeks, branches, lakes, reservoirs, ponds, drainage systems, springs, wetlands, wells and other bodies of natural or artificial surface or subsurface water into which the MS4 outfalls flow.

Contour - a line of equal elevation above a specified datum, usually mean sea level.

Contour Line - a line joining points having or representing equal elevations.

Department, The – the Department of Land Planning & Development Services of Jefferson County, Alabama.

Director, The – the Director of the Department of Land Planning & Development Services of Jefferson County, Alabama.

Discharge - the passing of water or other liquid through an opening or along a pipe, conduit or channel; the rate of flow of water, silt, or other mobile substance which emerges from a pipe, conduit or channel, usually expressed as cubic feet per second, gallons per minute or million gallons per day.

Drainage - the removal of surface water from a given area either by gravity or by pumping; commonly applied to surface water and groundwater.

Drainage Area - that area contributing runoff to a single point measured in a horizontal plane, which is enclosed by a ridge line; the area of a drainage basin or watershed, expressed in acres, square miles or other unit of area.

Engineer - a person currently licensed by the Alabama State Board of Registration for Professional Engineers and Land Surveyors to provide engineering services.

Erosion - wearing away of land surfaces as a result of the movement of wind or water.

Erosion Control - the application of measures to reduce erosion of land surfaces.

Erosion and Sedimentation Control Plan - documentation prepared by an applicant, usually submitted in conjunction with construction plans, depicting the manner in which the requirements of this Article – to address issues associated with storm water for purposes such as preventing pollution, improving water quality, keeping pollutants out of runoff, and implementing Best Management Practices – will be met.

Grading - any act by which soil is cleared, stripped, stockpiled, excavated, scarified or filled, or any combination thereof.

Illicit Connection - any man-made conveyance connecting an illicit discharge directly to the MS4.

Illicit Discharge - any discharge that is not composed entirely of storm water, except discharges pursuant to a NPDES permit and discharges which are specifically excepted from this Article.

Land Disturbing Activity - any change to a property that may result in soil erosion or the movement of sediment, or cause an increase or change of direction in water run-off or drainage, including but not limited to the clearing, dredging, grading, compaction, excavating, transporting or filling of land.

Maximum Extent Practicable – full implementation and regular maintenance of available industry-standard technology and effective management practices – such as those contained in the latest edition of the *Alabama Handbook for Erosion Control, Sediment Control, and Stormwater Management on Construction Sites and Urban Areas*, Alabama Soil and Water Conservation Committee (ASWCC), being used by ADEM – designed to prevent and/or minimize discharges of pollutants and ensure protection of groundwater and surface water quality.

Minor Extension - an addition to an existing utility pipeline or other utility line in which the land disturbed consists of fewer than 7,500 linear feet.

MS3 - Municipal Separate Storm Sewer - a conveyance or conveyances (including roads with drainage systems, municipal streets, catch basins, curbs, gutters, ditches, man-made channels and storm drains), owned or operated by a city, town or county or other public body (created by, or pursuant to, State law) having jurisdiction over storm water.

MS4 - Municipal Separate Storm Sewer System - a system of municipal separate storm sewers, each meeting the definition of MS3 above.

NPDES - National Pollutant Discharge Elimination System.

Outfall - a point source (meaning any discernible, confined and discrete conveyance, including, but not limited to, any pipe, ditch, channel, tunnel, conduit, well, discrete fissure, container rolling stock, concentrated animal feeding operation, landfill leachate collection system, vessel or other floating craft from which pollutants are or may be discharged, but not including return flows from irrigated agriculture or agricultural water runoff) at the point of a discharge to Waters of the United States of America.

Pollutant - includes, but is not limited to, the pollutants specified in Code of Alabama 1975, § 22-22-1 (b) (3) and any other effluent characteristics specified in a permit.

Pollutant Loading - the amount of a pollutant entering the MS4.

Qualified Credentialed Professional - a Professional Engineer, an Alabama Natural Resources Conservation Service professional designated by the State Conservationist, or a Certified Professional In Erosion And Sediment Control (CPESC). A QCP includes a registered landscape architect, a registered land surveyor, a Professional Geologist, a registered forester, a Registered Environmental Manager as determined by the National Registry of Environmental Professionals (NREP), and a Certified Professional Soil Scientist (CPSSc) as determined by ARCPACS, and other ADEM-accepted professional designations, certifications, and/or accredited university programs that can document requirements regarding proven training, relevant experience, and continuing education, that enable recognized individuals to prepare CBMPPs, to make sound professional judgments regarding Alabama NPDES rules, the requirements of this Article, planning, design, implementation, maintenance, and inspection of construction sites, receiving waters, BMPs, remediation/cleanup of accumulated offsite pollutants from the regulated site, and reclamation or effective stormwater quality remediation of construction associated land disturbances, that meet or exceed recognized technical standards and guidelines, effective industry standard practices, and the requirements of this Article. The QCP shall be in good standing with the authority granting the registration or designation.

Registration - filing, with the Jefferson County Department of Land Planning & Development Services, of any approved plan(s) issued pursuant to, or otherwise in association or conjunction with, this Article.

Sediment - solid material settled from suspension in a liquid that has been transported and deposited from its site of origin by air, water, ice or gravity as a product of erosion and has come to rest on the earth's surface either above or below a water surface, usually, inorganic or organic particles originating from weathering, chemical precipitation, or biological activity.

Silviculture - the care and cultivation of forest trees, including site preparation, planting, pruning, thinning and harvesting.

Site - any tract, lot or parcel of land or combination of contiguous tracts, lots or parcels of land to be developed as a unit, subdivision or project.

Stabilization - the prevention of soil movement by any of various vegetative and/or structural means.

Storm Water - the excess water running off from the surface of a drainage area during and immediately after a period of rain; i.e., that portion of the rainfall and resulting surface flow that is in excess of what can be absorbed through the infiltration capacity of the surface of the basin.

Storm Water Management - the incorporation of a variety of activities and equipment into a plan (the erosion and sedimentation control plan) to address concerns associated with storm water for the purpose of preventing pollution, improving water quality, keeping pollutants out of runoff, and the implementation of Best Management Practices.

Stream - areas where surface waters produce a defined channel or bed that demonstrates clear evidence of the passage of water and includes, but is not limited to, bedrock, channels, gravel beds, sand and silt beds, and defined-channel swales. The channel or bed need not contain water year-round. This definition is not meant to include artificially-created irrigation ditches, canals, storm or surface water runoff devices, or other artificial water courses unless they are used by salmonid or created for the purposes of stream mitigation.

Structural Controls - measures incorporated into existing storm water drainage systems or newly constructed systems to prevent or minimize the discharge of pollutants for the purpose of maintaining and/or improving water quantity and quality management; quantitative control by a system of vegetative and structural measures that control the increased volume and rate of surface runoff caused by man-made changes to the land; and qualitative control by a system of vegetative, structural and other measures that reduce or eliminate pollutants that might otherwise be carried by surface runoff.

Turbidity - a measure of fine suspended matter in liquids assessing the condition of water or wastewater wherein the presence of suspended matter results in the scattering and absorption of light rays, and/or causes substantial visible contrast with the natural appearance of waters or interferes with any beneficial uses which they serve.

Utility - a business or service which is engaged in regularly supplying the public with some commodity or service which is of public consequence and need, such as electricity, gas, water, telephone service and telegraph service.

Variance - any reduction or relaxation of the minimum requirements of this Article in situations where, owing to exceptional circumstances or conditions peculiar to a specific site, strict adherence to the provisions of this Article would be unnecessary or result in undue hardship; provided, however, that the granting of such variance shall not result in any condition, or in any other way be, contrary to the spirit and intent of this Article.

Wetland - areas that are inundated or saturated by surface or ground water at a frequency and duration sufficient to support, and that under normal circumstances do support, a prevalence of vegetation typically adapted for life in saturated soil conditions. Wetlands generally include swamps, marshes, bogs, and similar areas.

13.20 Administration.

The Department of Land Planning & Development Services (The Department) shall be responsible for the enforcement of the provisions of this Article throughout the territorial jurisdiction of the County, under the oversight of its Director and/or Chief Civil Engineer.

13.21 Registration Required.

Before the commencement of any land-disturbing activity that is not exempted from the requirements of this Article, the owner of the land on which such activity shall be conducted – or his/her duly authorized agent – must register an erosion and sedimentation control plan with the Jefferson County Department of Land Planning & Development Services.

13.22 Exceptions.

Land-disturbing activities that shall be exempt from the registration requirements of this Article include those that follow below. However, the persons conducting these activities shall nevertheless remain responsible for compliance with any other applicable law.

1. Agriculture.
2. Silviculture.
3. Gardens, landscaping, home repairs, home maintenance work, minor house additions, and other related or similar activities which result in only minor soil erosion, including the construction, maintenance or repair of accessory structures, on individual residential lots containing an existing, established residence.
4. Minor activities on single- or two-family residential properties, such as individual connections for utility services and sewer services, and minor grading for driveways, yard areas and sidewalks.
5. Minor maintenance, minor repair, and the minor extension of any existing underground public utility lines; provided, that the utility company which owns such lines has received approval of a general erosion and sedimentation control plan for such maintenance, repair, and extension; and provided further, that any utility company making a minor extension (as defined in Section 13.12 of this Article) disturbing more than 1,000 linear feet of land must give the Department written notice of such prior to the commencement of the activity.
6. The construction, repair or rebuilding of railroad tracks.
7. Minor subsurface exploratory excavations under the direction of soils engineers or engineering geologists.
8. The opening of individual burial sites in property which has been approved for such use by all necessary governmental authorities.
9. Digging of water wells or environmental monitoring wells.

13.30 Application and Registration Procedures.

- a. All erosion and sedimentation control plans shall be prepared by a Qualified Credentialed Professional, except those plans related to the construction of individual single-family residences. The erosion and sedimentation control plan shall be a part of all construction plans filed with the Department prior to the commencement of any land-disturbing activity on the site. The plan will be reviewed by the Department, in conjunction with the County's review of the construction plan set as a whole, for compliance with the latest edition of the *Alabama Handbook for Erosion Control, Sediment Control, and Stormwater Management on Construction Sites and Urban Areas*, Alabama Soil and Water Conservation Committee (ASWCC), being used by ADEM (as well as with the provisions of this Article); the review will be conducted in accordance with the fee and time schedules established for construction plan review by the Jefferson County

Commission and the Department respectively; and any subsequent approval of such construction plans shall be understood to include and constitute acceptance of the erosion and sedimentation plan as well.

- b.** For erosion and sedimentation control plans not submitted as part of a complete construction plan set, each application for registration of a land disturbing activity shall be accompanied by a nonrefundable fee in accordance with the Fee Schedule adopted by the Jefferson County Commission.

In those cases, the Department shall review the plan as described in Item a. above, and either accept or reject the erosion and sedimentation control plan within fourteen (14) days of filing. If the erosion and sedimentation control plan is rejected, the Department shall provide the applicant with written notice of the reasons for its rejection. Any resubmissions shall be processed in the same manner.

- c.** If the Department determines, either upon review of such plan or on inspection of the site, that a significant risk of off-site sedimentation or erosion exists, it will require a revised plan be considered by the preparing Qualified Credentialed Professional.
- d.** Erosion and sedimentation control plans shall contain architectural and engineering drawings, maps, assumptions, calculations, and narrative statements as needed to describe adequately the proposed development of the site and the measures planned to meet the Basic Control Objectives set forth in Section 13.31. Plan content may vary to meet the needs of specific site conditions.
- e.** In no case shall any proposed land-disturbing activity be commenced prior to the acceptance of an erosion and sedimentation plan by the Department, and its registration with same. Neither shall such registration excuse the owner from the responsibility for obtaining any other required permits or licenses.
- f.** All applications for registration of an erosion and sedimentation control plan shall include the property owner's or owners' written consent for Jefferson County, or the designated agent of Jefferson County, to enter upon the property or properties in order to abate any and all violations of this Article, or of the registered erosion and sedimentation control plan, as provided for in Sections 13.51 and 13.60 of this Article.
- g.** The Department must be notified immediately upon any change in ownership of property for which an erosion and sedimentation control plan has been registered, and/or any change in the person or persons responsible for ensuring compliance with the provisions of this Article.
- h.** Whenever there is a conflict between federal, state, or local laws, ordinances, rules and regulations, orders or decrees, the more restrictive provision shall apply.

13.31 Basic Control Objectives.

The basic control objectives which should be considered in developing and implementing an erosion and sedimentation control plan are to:

- a. **Identify Critical Areas.** On-site areas which are subject to severe erosion, and off-site areas which are especially vulnerable to damage from erosion and/or sedimentation caused from increased run-off are to be identified and receive special attention.
- b. **Limit Exposed Areas.** All land-disturbing activities should be planned and conducted to minimize the size of the area to be exposed at any one time.
- c. **Limit Time of Exposure.** To the maximum extent practicable, all land-disturbing activities should be planned and conducted to limit exposure to the shortest feasible time.
- d. **Control Surface Water.** Surface water runoff originating upgrate of exposed areas should be controlled to reduce erosion and sediment loss, to the maximum extent practicable, during the period of exposure.
- e. **Control Sedimentation.** All land-disturbing activities should be planned and conducted so as to prevent offsite sedimentation damage.
- f. **Manage Storm Water Runoff.** When the increase in storm water volumes, peak rates and/or velocity of storm water runoff resulting from a land-disturbing activity is sufficient to cause damaging accelerated erosion of the receiving ditch or channel stream, plans should include measures to help control the velocity and/or rate of release so as to minimize accelerated erosion and increased sedimentation of the ditch or stream channel. This may include the use of outlet energy dissipaters, detention methods, ditch or in-stream channel measures or engineered controls.
- g. **Low Impact Development Techniques.** Erosion and sedimentation control plans should seek to incorporate low impact development and environmental site design techniques, such as infiltration and capture/re-use of storm water, to the maximum extent practicable.

13.32 Mandatory Standards for the Erosion and Sedimentation Control Plan.

All erosion and sedimentation control plans shall include, incorporate or otherwise account for or address the elements listed below.

- a. No land-disturbing activity shall be permitted in proximity to a lake, natural watercourse, or adjacent property where applicable unless a buffer zone is provided along the boundary of sufficient width to confine siltation and/or prevent erosion, to the maximum extent practicable, provided that the land-disturbing activity is not in connection with the construction of facilities to be located on, over, or under a lake, natural watercourse, or adjacent property.
- b. The angle for graded slopes and fills shall be no greater than the angle which can be retained by vegetative cover or other adequate erosion control devices or structures. In any event, slopes left exposed will, within the shortest feasible time of final grading

(though not to exceed 14 days, per Section 13.40(d)), be planted or otherwise provided with ground cover, devices, or structures sufficient to restrain erosion.

c. Design and Performance Standards.

1. Structural erosion and sedimentation control measures shall be so planned, designed, and constructed as to provide control from the calculated peak rates of runoff from a ten-year frequency storm. Runoff rates may be calculated using the procedures in the USDA, Soil Conservation Service's "National Engineering Field Manual for Conservation Practices," or other acceptable calculation procedures. Runoff computations shall be based on rainfall data published by the National Weather Service for the area.
2. Structural controls shall be designed and maintained as required so as to minimize erosion and pollution to the maximum extent practicable. All surface water flowing toward the construction area shall, to the maximum extent practicable, either be passed through the site in a protected channel or diverted by using berms, channels, pipes or sediment traps, as necessary.
3. Erosion and sediment control measures shall be designed, based on the size and slope of the disturbed areas or drainage areas, to minimize erosion and to control sediment to the maximum extent practicable. Sediment in runoff water must be minimized by using the appropriate BMPs.
4. Discharges from sediment basins and traps must be conducted in a manner consistent with good engineering practices. Sediment-laden or otherwise polluted water discharged to the MS4 must be addressed in a manner consistent with good engineering practices and the requirements of this ordinance.
5. The erosion and sedimentation control plan shall include measures to reduce erosion and other adverse impacts to MS4 drainage system which would result from an increase in the volume of water and the rate of runoff of water during land-disturbing activities.

d. Additional Standards Regarding Lakes and Natural Watercourses, Stream Banks and Channels.

1. Land-disturbing activity in connection with construction in, on, over, or under a lake or natural water course shall be planned and conducted, to the maximum extent practicable, in such a manner as to minimize the extent and duration of disturbance of the stream channel.
2. The relocation of a stream, where relocation is an essential part of the proposed activity, shall be planned and executed so as to minimize changes in the stream flow characteristics, except when justification for significant alteration to flow characteristic is provided. Furthermore, the U.S. Army Corps of Engineers must approve the relocation of any stream or waterway prior to acceptance of such plan by the Department, and documentation of such approval provided to the Department as part of the plan submission.

3. Provision may be required for the permanent protection of on-site or adjacent stream banks and channels from the erosive effects of increased velocity and volume of storm water runoff resulting from certain land-disturbing activities.
 - (a) A combination of storage and controlled release of storm water runoff may be required.
 - (b) Detention storage and controlled release will not be required in those instances where the person planning to conduct the activity can demonstrate that the storm water release will not cause an increase in accelerated erosion or sedimentation of the receiving ditch, stream channel, or other drainage facility, taking into consideration any anticipated development of the watershed in question.

e. Standards Pertaining to Related Off-Site Activities.

1. **Borrow and Waste Areas.** When the person conducting the land-disturbing activity is also the person conducting the borrow or waste disposal activity, areas from which borrow is obtained shall be considered as part of the land-disturbing activity where the borrow material is being used or from which the waste material originated, and must be included in the erosion and sedimentation control plan. When the person conducting the land-disturbing activity is not the person obtaining the borrow and/or disposing of the waste, these areas shall be considered a separate land-disturbing activity.
2. **Access and Haul Roads.** Temporary access and haul roads (other than public roads) constructed or used in connection with land-disturbing activity shall be considered a part of such activity.

13.33 Application Requirements.

All applications for registration of an erosion and sedimentation control plan must include the following information:

- a. Name of applicant, with telephone numbers, email address, facsimile machine number, and/or other information by which the applicant can be contacted.
- b. Address where applicant, or other local contact person who can furnish information about the land-disturbing activity, can be reached.
- c. Names, addresses, telephone numbers, email addresses, facsimile machine numbers, etc., of:
 1. the owner of the project;
 2. the owner of the property on which the project is to be located; and,

3. the ground lessee of the property, if any, on which the land-disturbing activity is to be conducted if the applicant is not the owner of the project and such property.
- d. Legal description and address, if any, of the property upon which the land-disturbing activity is to be conducted.
- e. Names, addresses, telephone numbers, email addresses, facsimile machine numbers, etc., of all contractors and subcontractors who shall implement any portion of the erosion and sedimentation control plan; provided, however, that if the contractor and the subcontractors have not been selected when the application for registration is filed, the applicant shall furnish such information to the Department within five (5) days of the day or days on which the contractor and/or subcontractors are selected.
- f. Name of the Qualified Credentialed Professional who has prepared/approved the erosion and sedimentation control plan, with telephone number, email address, facsimile machine number, and/or other information by which said Professional can be contacted (except for land-disturbing activities related solely to the construction of individual single-family residences).
- g. A written description of the BMPs which are shown on the plan, details of said BMPs, and a schedule of their implementation during land-disturbing activities and construction; a projected time schedule for the commencement and completion of the land-disturbing activity itself; and specifications for BMP maintenance both during and after completion of the project.
- h. A description of the existing site conditions and adjacent topographical features; the information necessary to determine the erosion qualities of the soil on the site; potential problem areas of soil and erosion and sedimentation; soil stabilization specifications and storm water management considerations;
- i. A description of, and procedures for, proper storage, handling and disposal of construction materials stored on-site which could contribute to the pollutant loading to the MS4.
- j. A vicinity map.
- k. A scaled drawing or drawings, as required by Articles 9, 10 and 11 of the Jefferson County Subdivision & Construction Regulations, prepared by a Qualified Credentialed Professional and clearly depicting the methods, manner, activities, equipment, and any and all other elements to be used in the accomplishment of the erosion and sedimentation control plan, at a sufficient size and in sufficient detail as to be commensurate with the size of the project; the severity of the site condition and its potential for off-site damage; and to sufficiently document satisfaction of the standards set forth hereinabove, as well as achievement of the Basic Control Objectives of Section 13.31.

- l.** Signature of the applicant, property owner, project manager or other responsible party attesting to the following: “I certify, under penalty of law, that this document and all attachments were prepared under my direction or supervision and that I have personally examined, and I am familiar with, the information in this document and such attachments. Based on my inquiry of those individuals immediately responsible for obtaining the information, I believe the submitted information is true, accurate and complete. I am aware that there are significant penalties for submitting false information, including the possibility of fine and civil penalty.”
- m.** The property owner’s or owners’ written consent for Jefferson County, or the designated agent of Jefferson County, to enter upon the property or properties in accordance with Section 13.30(f) of this Article.

**13.40 Commencement of Land-Disturbing Activities:
Responsibilities of the Property Owner/Developer.**

No land-disturbing activity subject to the provisions and requirements of this Article shall be undertaken except in accordance with the following mandatory processes and procedures. Persons conducting land-disturbing activities shall take all reasonable measures referred to, or provided for, in this Article to protect all public and private property from damage caused by such activities, and to reduce storm water pollution to the maximum extent practicable.

- a.** A copy of the accepted erosion and sedimentation control plan shall be on file at the job site. Copies of all monthly reports and all accidental discharge reports submitted to ADEM must also be kept on-site and available for inspection by the Director or his/her designee.
- b.** The person(s) proposing to conduct any land-disturbing activity or an agent, contractor or other representative of such person must contact the Department at least five (5) business days before commencement of the land-disturbing activity to advise the Director or his/her designee of the commencement of such land-disturbing activity; unless, for good cause shown, the Director or his/her designee permits such person, contractor, agent or other representative to contact him nearer to the date of the commencement of such land-disturbing activity.
- c.** Other than land-clearing activities required to install the appropriate BMPs, all measures required by the erosion and sedimentation control plan shall be in place and functional before any clearing or earthmoving operations begin, and shall be constructed and maintained throughout the construction period. Temporary measures may be removed at the beginning of the workday, but shall be replaced at the end of the workday (unless conditions, such as a rain event, require them to be replaced earlier.)
- d.** The angle for graded slopes and fills shall be no greater than the angle which can be retained by vegetative cover or other adequate erosion control devices or structures. Any slope or fill which has been graded shall, within fourteen (14) days of the completion of such grading or the completion of any phase of grading, be planted or otherwise provided

with ground cover, materials, devices or structures sufficient to restrain erosion. The BMPs shall remain in place in accordance with the erosion and sedimentation control plan until the graded slope or fill is stabilized.

- e. Adequate protective measures shall be provided for the containment of hazardous substances and any other materials which may pollute the MS4, including petroleum products, lubricants and paint.
- f. The person engaged in or conducting the land-disturbing activity shall be responsible for maintaining all temporary and permanent erosion and sedimentation measures and facilities during the development of a site. The responsibility for maintaining all permanent erosion and sedimentation control measures and facilities after site development is completed shall lie with the landowner, until such time as adequate vegetative cover and site stabilization is achieved as determined by the Director or his/her designee.
- g. Control measures shall be maintained as an effective barrier to sedimentation and erosion in accordance with the provisions of this ordinance. All control measures shall be checked, and repaired as necessary, monthly in dry periods and within twenty-four (24) hours after any precipitation at the site of 0.75 inches or greater in any 24-hour period. During prolonged rainfalls, daily checking and, if necessary, repairing shall be done. The registrant of the erosion and sedimentation control plan shall maintain written records of such checks and repairs, which records shall be subject to inspection by Department personnel at any reasonable time.
- h. There shall be no distinctly visible floating scum, oil or other matter contained in the storm water discharge. The storm water discharge to an MS4 must not cause any color (except dyes or other substances discharged to an MS4 for the purpose of environmental studies and which do not have a harmful effect on the bodies of water within the MS4) or odor in the community waters that does not occur naturally from normal ecological or biological processes in the environment. The storm water discharge to the MS4 must result in no materials in concentrations sufficient to be hazardous or otherwise detrimental to humans, livestock, wildlife, plant life or fish and aquatic life in the community waters.
- i. A ground cover sufficient to restrain erosion shall be planted or otherwise provided within fourteen (14) days on that portion of any tract upon which further active construction is not being undertaken; provided, that this activity shall not apply to cleared land forming the basin of a reservoir later to be inundated.
- j. When the land-disturbing activity is finished and stable vegetation or other permanent controls have been established on all remaining exposed soil, the owner of the land where the land-disturbing activity was conducted, or his authorized agent, shall notify the Department of these facts, and request a final inspection.

k. Accidental Discharges.

1. In the event of any discharge of a hazardous substance or a significant spill of a hazardous substance to the MS4 which could constitute a threat to human health or the environment, the owner or operator of the site shall give notice to the Department and the Jefferson County Emergency Management Authority in the same manner, and within the same time, as is required by State regulations for notice to ADEM.
2. The owner or operator of such property shall take all reasonable steps to minimize any adverse impact to the community waters caused by discharges to the MS4, including such improved or additional monitoring as may be necessary to determine the nature and impact of the discharge. Absent a compelling public interest to the contrary, it shall not be a defense for the owner or operator in an enforcement action that it would have been necessary to halt or reduce the business or activity of the site, or any project or facility thereon, to maintain water quality and minimize any adverse impact that the discharge may cause.

**13.50 Monitoring and Inspection of Land-Disturbing Activities:
Authority of the Department of Land Planning & Development Services**

- a. The Director or his/her designee, bearing proper identification, may enter and inspect all land-disturbing activities for regular periodic inspections, investigations, monitoring, observations, measurements, enforcement, sampling and/or testing to verify compliance with the provisions of this ordinance, and to confirm the implementation and maintenance of any erosion and sedimentation control plan approved for such land-disturbing activities.
- b. It is hereby further provided that any site undergoing land-disturbing activity shall be inspected when the Director or his/her designee believes, as a result of complaints or monitoring activity, that land-disturbing activities on the site are causing a substantial pollutant loading which threatens the MS4; or if the Director or his/her designee has reasonable cause to believe that discharges from a land-disturbing activity to the MS4 may cause an imminent threat to human health or the environment. Such inspections may take place at any time and without notice.
- c. Whenever the Department determines that significant sedimentation is occurring as a result of a land-disturbing activity, despite application and maintenance of protective practices, the person conducting the land-disturbing activity or the person responsible for maintenance will be required to take additional protective action, and to furnish this information to the Department.
- d. The Director or his/her designee shall inspect the site within five (5) working days after receipt of notice that the land-disturbing activity is finished, and stable vegetation or other permanent controls have been established on all remaining exposed soil, and may require additional measures to stabilize the soil and control erosion and sedimentation. If additional measures are so required, written notice of the requirement for such additional

measures shall be delivered to the owner, and the owner shall continue to be covered by the original registration issued until a final inspection approves the project as having been satisfactorily completed. The Director or his/her designee shall provide to the owner, within ten (10) days of the date of such approval, a certification of completion showing that the requirements of the erosion and sedimentation control plan registration have been fulfilled.

13.51 Surety Requirements.

- a. Prior to commencement of land disturbing activities.** In order for the Department to issue a Zoning Approval allowing land disturbing and/or construction activities to begin, and except as noted in Section 13.51(c) below, the registrant/property owner must submit an irrevocable letter of credit or other form of surety acceptable to the Director, styled in favor of the Jefferson County Treasurer, in such amount as specified herein to assure that the work – if not completed or if not done in accordance with the approved plans and specifications – will be corrected in order to eliminate and/or prevent hazardous conditions, or erosion and/or sedimentation problems, to the maximum extent practicable, pending final approval of the work as set forth in Section 13.50(d) above.

The surety shall:

1. contain, or have attached to it as an exhibit, a legal description of the site and/or a valid 911 address;
2. remain in effect for such reasonable period of time as may be required by the Director or his/her designee (pending final inspection and approval of the work as set forth in Section 13.50(d) above);
3. be set to \$3,000.00 per acre, or portion thereof;
4. be set to double the amount determined by Item 3 above where clearing or earthwork is performed in areas designated as floodways, floodplains or areas susceptible to landslides; and,
5. must be issued by a bank having a branch in Jefferson County.

- b. Following completion of land disturbing activities.** In the event a Certificate of Occupancy is requested prior to complete stabilization of a property, the Director or his/her designee shall require a surety – in accordance with the terms and conditions set forth in Section 13.51(a) above, but to be separate and apart from any surety required prior to the land disturbing activity – in order to assure the necessary work to properly stabilize the property is accomplished.

- c. Exceptions to the surety requirements of this Article.** In cases where an erosion and sedimentation control plan is related to the construction of an individual single-family residence, the requirement for a surety prior to the commencement of the land disturbing activity (Section 13.51(a)) may be waived as follows:

1. Registrants who possess current certification as a Qualified Credentialed Inspector through the Homebuilders Association of Alabama, or is otherwise certified through a Department-sponsored or Department-approved training program, shall not be required to post the surety of Section 13.51(a) above (i.e., prior to the commencement of the accepted land disturbing activities).
2. Provided, however, that the Director shall have the right to require any registrant/owner who was initially not required to post a surety under this Section, but who subsequently has had any action taken against him/her by the Department for failure to comply with the requirements of this Article and/or an accepted erosion and sedimentation control plan, to post the surety of Section 13.51(a) above prior to the Department's issuance of any further Zoning Approvals to said individual.

13.60 Enforcement and Abatement

- a. **Unauthorized Discharges.** Any discharge of storm water made in violation of this ordinance, or of any condition of an erosion and sedimentation control plan registered pursuant to this ordinance, shall be subject to correction and/or abatement in accordance with applicable law; provided, however, that the following direct or indirect discharges into the MS4 are allowable under the terms of this ordinance (unless determined by the Director or his/her designee to be a source of contamination to the community water): landscape irrigation; uncontaminated water from foundation and footing drains; discharges from springs; lawn watering; and discharges from fire fighting activities.
- b. **Immediate Threats to Public Health or Welfare.** Notwithstanding any other provision in this ordinance to the contrary, in the event of an immediate threat to the public health or welfare, the Director may take any and all appropriate measures to remove or alleviate such threat.
- c. **Enforcement Authority.** The Director or his/her designee shall have the authority to issue notices of violation and citations, and to designate those persons who have enforcement authority. In exercising that authority, the persons enforcing the requirements of this Article shall follow the policies and procedures outlined herein below.
 1. **Written Notice.** Whenever an authorized employee of the Department finds that a registrant, or any other person discharging storm water, has violated or is violating this Article or the erosion and sedimentation control plan registered hereunder, the Department shall serve upon such person written notice of the violation. Within ten (10) days of such notice, the permit registrant/property owner shall submit to the Department a written explanation of the violation and a plan for the satisfactory correction and prevention thereof, including the specific action(s) to be taken. However, submission of said plan in no way relieves the discharger of liability for any violations occurring before or after receipt of the notice of violation.

2. **Consent Orders.** The Director or his/her designee is empowered to enter into consent orders, assurances of voluntary compliance, or other similar documents establishing an agreement with the person responsible for the noncompliance. Such orders will include specific action to be taken by the person to correct the noncompliance within a time period also specified by the order. Consent orders shall have the same force and effect as administrative orders issued pursuant to Items 4 and 5 below.
3. **Show Cause Hearing.** The Director or his/her designee may order any person who violates this Article, or any erosion and sedimentation control plan registered hereunder, to show cause why a proposed enforcement action should not be taken. Notice shall be served on the person, specifying the time and place for the meeting; the proposed enforcement action and the reasons for such action; and a request that the violator show cause why this proposed enforcement action should not be taken. The notice of the meeting shall be served personally, or by registered or certified mail (return receipt requested), at least ten (10) days prior to the hearing.
4. **Compliance Order.** When an authorized employee of the Department finds that any person has violated or continues to violate this Article, or any erosion and sedimentation control plan registered hereunder, the Director or his/her designee may issue an order to the violator directing that, following a specified time period, there must be adequate structures, devices, and/or procedures installed and/or implemented, and properly operated thereafter. Orders may also contain such other requirements as might be reasonably necessary and appropriate to address the noncompliance, including the construction of appropriate structures, installation of devices, self-monitoring, and management practices.
5. **Elimination of Illicit Discharges.** Any illicit discharge (as defined in this Article) shall be eliminated as expeditiously as possible, and any improper disposal practices ceased immediately upon identification of, and notice to, the responsible parties. Where elimination of an illicit discharge within ten (10) working days is not possible, the responsible party shall submit an expeditious schedule for removal of the discharge; and in the interim, shall take all reasonable and prudent measures to minimize the discharge of pollutants to the MS4.
6. **Cease and Desist Orders.** When an authorized employee of the Department finds that any person has violated or continues to violate this Article, or any erosion and sedimentation control plan registered hereunder, the Director or his/her designee may issue an order to cease and desist all activity declared to be in violation of this Article, and direct those persons in noncompliance to:
 - (a) comply forthwith with all requirements of this Article, and any erosion and sedimentation control plan registered pursuant hereto; and/or
 - (b) take such appropriate remedial or preventive action as may be needed to properly address a continuing or threatened violation, including halting operations and terminating the discharge.

7. **Stop Work Orders.** Failure to promptly undertake and complete, in a timely manner, whatever remedial and/or preventive actions are necessary, ordered or otherwise required in order for a work site to be brought into full compliance with this Article, or with the relevant erosion and sedimentation control plan, shall subject the registrant, property owner and/or developer to issuance of an order requiring all work on the site – land disturbing activities, demolition, construction, etc. – to be immediately halted pending the necessary corrective action.
8. **Further Action.** The Jefferson County Department of Land Planning & Development Services shall monitor all land-disturbing activities, including those approved under an ADEM NPDES permit, for compliance with the BMP/erosion and sedimentation control plan, and with all other applicable conditions or requirements as may have been made a part of said permit. The Department shall also be authorized to take whatever enforcement action may be necessary to bring a work site into compliance with said permit, as well as with all applicable requirements of this Article, to the fullest extent allowed by law. And, in any case where the Director determines that a non-compliant condition cannot or will not be satisfactorily addressed by the responsible parties, that enforcement action shall include the right for Jefferson County, or a designated agent of said County, to enter upon such non-compliant property (as provided in Section 13.30(f)); to carry out the work necessary to eliminate and/or prevent hazardous conditions, or erosion and/or sedimentation problems (as provided in Section 13.51); and to assess whatever penalties as may be deemed appropriate (under Section 13.61) by a court of law.

13.61 Penalties.

- a. Any person who shall commit any act declared unlawful under this Article; who violates any provision of this Article; who violates the provisions of any erosion and sedimentation control plan registered pursuant to this Article; or who fails or refuses to comply with any lawful communication or notice from the County to abate or take corrective action, shall be guilty of a criminal offense.
- b. Notwithstanding the foregoing, the owner(s) of any property upon which a violation of this Article, or of a registered erosion and sedimentation control plan, has been cited by the Department shall be deemed ultimately responsible for the condition of, or the conditions being caused by, the land disturbing activity taking place on their property. And as such, said property owner(s) shall accordingly be subject to the penalties of this Section in the event such penalties cannot be levied against the person(s) actually committing the offense.
- c. Under the authority provided in Alabama Code § 11-45-9, Jefferson County declares that any person violating the provisions of this Article may be fined an amount not less than \$50.00 and not more than \$500.00 per day, and may be imprisoned or sentenced to hard

labor for a period not to exceed six months, for each day of each violation. Each day of violation shall constitute a separate violation.

- d.** The County shall have the right and authority to recover:
 - 1. all damages proximately caused by the violator to the County, which may include any reasonable expenses incurred in investigating violations of, and enforcing compliance with, this Article, or any other actual damages caused by the violation; and,
 - 2. the costs of the County's maintenance of storm water facilities when the user of such facilities fails to maintain them as required by this Article.
- e.** The County may bring legal action to enjoin the continuing violation of this Article. The existence of any other remedy, at law or equity, shall be no defense to any such actions.
- f.** The remedies set forth in this section shall be cumulative, not exclusive. It shall not be a defense to any action, civil or criminal, that one or more of the remedies set forth herein has been sought or granted.

13.62 Appeals of Penalties.

Any person aggrieved by the imposition of a civil penalty or damage assessment, as provided by this Article, may appeal said penalty or damage assessment to the Flood Hazard Appeal Board, as so authorized in Section 13.70 of this Article. Appeals of the penalties set forth herein above shall be processed as follows

- a.** The appeal shall be in writing and filed with the Department within 15 days after the civil penalty and/or damage assessment is served in any manner authorized by law.
- b.** Upon receipt of an appeal, the Flood Hazard Appeal Board shall hold a public hearing within 30 days, giving ten (10) days prior notice of the time, date, and location of said hearing by publication in a daily newspaper of general circulation. Ten (10) days prior notice by registered mail shall also be provided to the aggrieved party, such notice to be sent to the address provided by the aggrieved party at the time of appeal.
- c.** The decision of the Flood Hazard Appeal Board shall be final.

13.70 Establishment and Authority of the Flood Hazard Appeal Board.

The Jefferson County Commission established a board of five (5) members known as the Flood Hazard Appeal Board in conjunction with the adoption of the Floodplain Management Ordinance on September 19, 2006. The composition of the Board, and the powers and duties of the members of the Board with respect to the Floodplain Management Ordinance, are set forth in Article 5 of said Ordinance. However, having already established said Board in order to review and hold hearings in consideration of variances to Jefferson County's floodplain regulations; and

having determined that matters of erosion and sedimentation control are very closely related to matters addressed by the floodplain regulations; the Jefferson County Commission hereby, upon adoption of this Article, establishes and empowers the Flood Hazard Appeal Board to also review and hold hearings in the consideration of variances to the regulations and requirements of this Article as well, as provided herein below.

13.71 Appeals of the Requirements of this Article.

The Flood Hazard Appeal Board (“Board”), as established by the Jefferson County Commission in conjunction with the adoption of the Floodplain Management Ordinance on September 19, 2006, shall have the following powers and duties with respect to this Article 13 of the Jefferson County Subdivision and Construction Regulations:

- a. Administrative Review.** The Board shall hear and decide the following:
 1. appeals where it is alleged there is an error in any order, requirement, decision, or determination made by the Director of Land Planning & Development Services/Chief Civil Engineer in the enforcement or administration of this Article; or,
 2. requests for the interpretation of the provisions of this Article.

- b. Variances.** The Board shall issue variances from the terms, provisions or requirements of this Article only in accordance with the following criteria:
 1. Variances may be issued for development necessary for the conduct of a functionally dependent use, provided the intent of this Article is met; no reasonable alternative exists; and that development on and around the affected property is protected by methods that minimize erosion, sedimentation and storm water run-off, creating no threats to public safety, private property, the MS4 or the environment.
 2. In reviewing such requests, the Board shall consider all technical evaluations, relevant factors, and all standards specified in this and other Articles and Sections of the Jefferson County Subdivision and Construction Regulations.
 3. A variance shall be issued only when there is a finding of good and sufficient cause, and either:
 - (a) a determination that failure to grant the variance would result in exceptional hardship; or
 - (b) a determination that strict adherence to certain requirements of this Article is unnecessary due to the location, topography or other circumstances or factors pertaining to the proposed site.

In evaluating both (a) and (b) above, the granting of a variance must not result in increased erosion, sedimentation, storm water run-off, or any other aspects of drainage beyond the parameters established by this Article; nor will such variance pose any threats to public safety, cause extraordinary public expense, create a

nuisance, cause fraud on or victimization of the public, or conflict with any existing local laws or ordinances.

4. Any deviation from the standards of this Article must be weighed carefully. Variances shall only be issued upon a determination that the variance is the minimum necessary to afford appropriate relief.
- c. In exercising the above mentioned powers, the Board may reverse or affirm, wholly or in part; may modify the order, requirement, decision, or determination appealed from; and/or may make such order, requirement, decision, or determination as ought to be made; and, to that end, shall have all the powers of the Director of Land Planning & Development Services/Chief Civil Engineer, from whom the appeal is taken.
- d. An appeal shall stay all proceedings in furtherance of the action appealed from, unless the Director of Land Planning & Development Services/Chief Civil Engineer certifies to the Board that such action could cause imminent peril to life or property, or substantial damage to the environment. However, this provision shall not be construed as authorizing the approval or registration of any erosion and sedimentation control plan, nor any construction plans based thereon, which do not fully comply with the requirements of this Article prior to the hearing and granting of relief from the Board.

13.72 Appointments, Meetings and Procedures of the Flood Hazard Appeal Board.

- a. The appointments to and composition of the Board, and its meeting format, rules and procedures shall be in accordance with the relevant Section(s) of the Floodplain Management Ordinance for Jefferson County, Alabama.
- b. The Department shall maintain the records of all appeal actions, including justification for any variances granted.
- c. Any person aggrieved by an order issued by the Director or his/her designee under the authority of this Article; by an interpretation of the provisions of this Article made by the Director; or by the strict application of any requirements or provisions of this Article; may appeal such to the Flood Hazard Appeal Board for hearing and review. A written notice of any such appeal must be filed with the Board through the Department, said notice to set forth, with particularity, the order complained of and/or relief sought
- d. The Board shall meet at calls of the chairman, or in any event the Board shall meet within thirty (30) days after the filing of a written notice of appeal.
- e. All hearings of the Board shall be open to the public. Written notice of the public hearing shall be given to all owners of properties adjoining the affected site.
- f. The Board shall render a decision on an appeal within thirty (30) calendar days after hearing the petition, except a decision may be postponed where additional information is required by the Board – whether of the appellant or County staff – provided that a

decision may be postponed no more than sixty (60) calendar days. The Board shall reconvene to consider the additional information and render a final decision.

- g.** All decisions of the Board shall state the basis and conditions upon which the decision was made and the reason therefore.

13.80 Repeal of Existing or Prior Ordinances, Regulations and Requirements.

Upon adoption of this Article, these regulations shall immediately and thereafter govern land-disturbing activities, and all matters pertaining to erosion and sedimentation control, within the unincorporated limits of Jefferson County, Alabama, as now or hereafter established; and within such territory as shall now or hereafter be within its jurisdiction; with the exceptions as specified herein. Any and all ordinances previously adopted, and associations established in conjunction therewith, are hereby repealed.

(Entire Article Amended and Adopted 12/8/2009)

Jefferson County, Alabama
Development Services Department

Erosion and Sedimentation Control (ESC) Plans Requirements
Summary of Guidelines for ESC Plans Submittal
For Commercial Sites (Non-Residential Construction Sites)

[See Article 13 of the Jefferson County Subdivision & Construction Regulations, as Amended by the Jefferson County Commission January 2010 for Complete and Total Requirements]

Notes: 1. Erosion and sedimentation control (ESC) plans that are submitted to the County, as part of a set of overall construction plans, shall be reviewed in conjunction with the County's review of the construction plan set as a whole, in accordance with the fee and time schedules established for construction plan review by the Jefferson County Commission and the Department of Land Planning and Development Services and approval of such construction plans shall be understood to include and constitute acceptance of the erosion and sedimentation plan as well.

2. Erosion and sedimentation control plans that are not submitted as part of a complete construction plan set, must be accompanied by an A. Application for registration of a land disturbing activity and B. a non-refundable fee of \$100.00 for Residential Sites and \$400.00 for Non-Residential Sites. Applicants that have submitted plans that are rejected shall be notified, in writing, of the reasons for rejection. Resubmissions shall be processed in the same manner.

3. ESC requirements, measures, and details that are not specifically addressed in Jefferson County's Article 13, of the Jefferson County Subdivision Regulations shall be prepared according to the specifications and requirements of the *Alabama Handbook for Erosion Control, Sediment Control, and Stormwater Management on Construction Sites and Urban Areas*, prepared by the Soil and Water Conservation Committee, or other acceptable calculation procedures.

4. No land-disturbing activity shall be commenced prior to the approval/acceptance of the overall construction plan set OR prior to acceptance of the stand-alone erosion and sedimentation control plan. The Erosion and Sedimentation Control Plan shall consist of (at a minimum) the Following Information:

- A. Erosion and Sedimentation Control Plans must be prepared by a Qualified Credentialed Professional ("QCP") and plans must include information allowing the Department to contact the QCP. The plans shall include the name, phone number, email address (if applicable) and cell phone number (if applicable) of the QCP.
- B. Plans that are not accepted will be returned to the QCP for revisions.
- C. **ESC measures must be installed prior to any land disturbing activities taking place.** The Department must be notified (phone number: 325-5321) after ESC measures have been installed.

- D. The size of the total disturbed area must be stated on the plan and the projected project start date and end date must also be stated on the plan.
- E. The Erosion and Sedimentation Control Plans shall show all architectural and/or engineering drawings pertaining to erosion and sedimentation control, all maps, assumptions, calculations, and narrative statements as needed to adequately describe the proposed site preparation and the temporary and permanent erosion and sedimentation control measures planned to meet Article 13 “Erosion and Sedimentation” requirements, as stated in Jefferson County’s Subdivision & Construction Regulations.
- F. All land disturbing activities should be planned/phased whenever possible and shall be conducted to minimize the exposure of all disturbed areas to the shortest feasible time. Exposed soil that will not be disturbed for 14 days or more shall be planted or otherwise provided with ground cover, devices, or structures sufficient to prevent erosion.
- G. A grading plan is required and must be sealed, signed and dated by a registered professional architect, engineer, or landscape architect. The grading plan must contain existing and proposed contours and all existing and proposed improvements. (Existing and proposed improvements such as curbs and gutters, valley gutters, etc., must be apparent from the grading plan submitted).
- H. Erosion and sedimentation control plans shall contain all proposed site improvements, including, but not limited to: buildings; parking; storm water inlets; storm water outlets; storm water pipes; storm water flumes; proposed drainage ditches; entrance and exit drive(s), and etc.
- I. A buffer zone must be provided between any land disturbing activities and any lake, natural watercourse, or adjacent property. The buffer zone must be of sufficient width to confine sediment and control erosion. Land disturbing activities for construction of facilities located on, over, or under a lake, natural watercourse, or adjacent property must be planned and conducted to minimize the extent and duration of disturbance to the lake or stream.
- J. Structural erosion and sedimentation control measures must be planned, designed, and constructed to provide control from the calculated peak run-off from a (10) year frequency storm. The volume and velocity of pre-construction and post-construction water flow from the site must be shown on the plan at the point(s) of exit from the site.
- K. Surface water, flowing toward the construction area must, if possible, be passed through the site in a protected channel or diverted from the construction site by using:
 - a. Berms;
 - b. Channels;
 - c. Pipes;
 - d. Sediment traps;
 - e. Etc.

- L. Site development that will increase the volume and/or velocity of water flowing into any on-site or adjacent stream banks and/or drainage channels, and that may cause erosion to such, will require temporary and permanent erosion protection and such measures must be specified and shown on the plans and details must be provided.
- M. The ESC permit does not negate the need to fulfill the requirements of any other Local, State and/or Federal permits. Local, State, and Federal permits that may also be required are the responsibility of the owner/authorized agent.
- N. The BMP Plan shall show the size of the entire area to be disturbed and shall call attention to any areas that will be disturbed on a separate schedule, to facilitate staging of land disturbance. The proposed project start date, all staged disturbance dates, and the proposed date of completion for the stages and for the entire project.
- O. The Erosion and Sedimentation Control Plans must show (a minimum of) twenty-five (25) feet outside of the property lines of the site to be disturbed. Within this twenty-five (25) feet, specific information must be shown:
 - 1. The existing (and proposed, if applicable) contours must be shown;
 - 2. All ditches, channels, streams, creeks, rivers, or other waterways, from which water enters the site to be disturbed, must be located on the plans and details of the water-carrying system(s) must be noted on the plans.
 - 3. All ditches, channels, streams, creeks, rivers, to which site drainage is, or will be, routed must be located on the plans and details of the receiving water-carrying system(s) must be noted on the plans;
 - 4. All existing structures must be located and identified on the plans.
- P. Plans must include specific, written, instructions from the QCP to the contractor, regarding erosion and sedimentation requirements. The written instructions must include, but are not limited to, the specific instructions (or equivalent) listed below.

Minimum Wording
Required on Plans

ESC plans, including ESC calculations, ESC measures, and ESC details have been prepared based upon Article 13, of the “Jefferson County Subdivision Regulations”. If any aspect of the plans requirements are not specifically addressed in Jefferson County’s, Article 13, then the ESC calculations, ESC Measures, and the ESC details conform to the March, 2009, “Alabama Handbook for Erosion Control, Sediment Control, and Stormwater Management on Construction Sites and Urban Areas”, prepared by the Soil and Water Conservation Committee, or other acceptable calculation procedures.

Minimum Wording
Required on Plans

A copy of the accepted erosion and sedimentation control plan shall be on file at the job site. Copies of all monthly reports and all accidental discharge reports, as submitted to ADEM, must also be kept on-site and must be available for inspection by the Director or his/her designee.

Minimum Wording
Required on Plans

The person(s) proposing to conduct any land disturbing activity, an agent, contractor, or other representative of such person, must contact the Department at least five (5) business days before the commencement of such land disturbing activity, to advise the Director and his/her designee of the commencement of the land disturbing activity. The Director or his/her designee may, for good cause,

allow such person, agent, contractor, or other representative to contact him/her nearer to the date of the commencement of the land disturbing.

Minimum Wording
Required on Plans

The angle for graded slopes and fills shall be no greater than the angle which can be retained by vegetative cover, or other adequate erosion control devices or structures. Any slope or fill which has been graded shall, within fourteen (14) days of the completion of such grading, or the completion of any phase of grading, be planted or otherwise provided with ground cover, materials, devices or structures sufficient to restrain erosion. The BMP's shall remain in place in accordance with the BMP Plan until the graded slope or fill is stabilized.

Minimum Wording
Required on Plans

Adequate protective measures shall be provided for the containment of hazardous substances and any other materials which may pollute the MS4. Petroleum products, lubricants, paints and all other hazardous substances shall be stored in accordance with SPCC regulations. These substances shall be stored away from all storm drains, ditches and gutters in water tight containers. Disposal of these materials shall be in accordance with ADEM Regulations. Contractors shall provide adequate trash containers, on site, for disposal of construction materials and the contractor shall be responsible for preventing trash from the site to enter into the storm drainage system.

Minimum Wording
Required on Plans

All control measures shall be checked, and repaired as necessary, monthly in dry periods and within twenty-four (24) hours after any rainfall at the site of 0.75 inches, within a twenty-four (24) hour period. During prolonged rainfalls, daily checking and, if necessary, repairs shall be made. The permittee shall maintain written records of such checks and repairs and those records shall be subject to the inspection of the Director or his/her designee at any reasonable time.

Minimum Wording
Required on Plans

All potentially hazardous materials shall be properly stored and may not be exposed to rain or stockpiled. All containers are to be closed and stored or placed in a covered area. All excess or waste materials are to be properly disposed of and trash and waste must be disposed of every ten (10) days, at a minimum.

Minimum Wording
Required on Plans

Erosion control measures shall be maintained as an effective barrier to sedimentation and erosion in accordance with the provisions of this Ordinance.

Minimum Wording
Required on Plans

Sediment deposits must be removed when they reach a depth of 15 inches or ½ the height of the silt fence as installed, to provide adequate storage volume for the next rain and to reduce the pressure on the silt fencing.

Minimum Wording
Required on Plans

Silt fencing fabric that is collapsed, torn, decomposing, or becomes ineffective must be replaced promptly.

Minimum Wording
Required on Plans

There shall be no distinctly visible floating scum, oil, or other matter contained in the storm water discharge. The storm water discharge to an MS4 must not cause an unnatural color (except dyes or other substances discharged to an MS4 for the purpose of environmental studies and which do not have a harmful effect on the bodies of water within the MS4) or odor in the community waters. The storm water discharge to the MS4 must result in no materials in concentrations sufficient to be hazardous or otherwise detrimental to humans, livestock, wildlife, plant life or fish and aquatic life in the community waters.

Minimum Wording
Required on Plans

When the land disturbing activity is finished and stable vegetation or other permanent controls have been established on all remaining exposed soil, the owner of the land where the land disturbing activity was conducted, or his/her authorized agent, shall notify the Department of these facts and request a Final Inspection. The Department shall then inspect the site within five (5) working days after receipt of the notice.

- Q. A Certificate of Occupancy (CO) or a Certificate of Completion will not be granted until the land disturbing activity is finished, stable vegetation or other permanent controls have been established on all exposed soil, and a final inspection has been performed.
- R. The owner of the property to be disturbed, or an authorized agent, must apply for the permit in person. An “authorized agent” must have a signed, notarized, affidavit from the owner, stating that he/she is authorized to apply for the permit.
- S. Parcel ID (PID) and, if available, street address;
- T. The telephone numbers, email addresses, facsimile machine numbers, etc. of (this information should be included on the cover sheet, along with the Vicinity Map, Property Address, and PID numbers):
 - i. The owner/developer of the property;
 - ii. The owner of the property (if different from above) on which the project is to be located;
 - iii. The ground lessee of the property (if applicable) on which the land-disturbance is to be conducted;
 - iv. All contractors and subcontractors who shall implement any portion of the erosion and sedimentation control plan;
 - v. The Qualified Credentialed Professional who has prepared the Erosion and Sedimentation Control Plan;



JEFFERSON COUNTY JOB SITE COMPLIANCE FORM



ZA # _____ was inspected on ____/____/____
(DATE)

PERMIT # _____

Initial Interim Final **Is in COMPLIANCE no action is necessary**

Initial Interim Final **Is in VIOLATION OF:**

EROSION and SEDIMENT CONTROL ORDINANCE

ZONING ORDINANCE

WEED AND LITTER ORDINANCE

CODE # ____/____/____/____/____/____/____/____

CODES LOCATED ON BACK OF FORM

YOU ARE HEREBY NOTIFIED TO:

TAKE CORRECTIVE MEASURES:

CEASE AND DESIST AND/ OR REMOVE THE VIOLATION LISTED:

STOP WORK IMMEDIATELY OR FURTHER ACTION WILL BE INITIATED

This notice delivered to /posted on _____ @ _____ : _____ AM PM
(Name or location) (Time)

Job Address: _____

Contact Y N person ___ phone ___ E-mail ___ Owner\Violator Name _____

P.I.D. ___ - ___ - ___ - ___ - ___ Zoning _____ Phone # /E-mail address _____

(Print Inspector's Name) (205) _____ - _____ (Phone Number) _____ (Inspector's Signature)

NOTES

Penalties: ZONING in accordance with act 630 general acts of 1967 a fine not more than \$100.00 or 10 days in jail for EACH violation EACH day
WEED AND LITTER in accordance with Title 13A Criminal Code of Alabama 1975 13-5-4(c) 13A-5-7(b) 13A-5-12(b) a fine not exceed \$200.00 and imprisonment in the county jail not to exceed 30 days Each day is a separate violation
EROSION CONTROL in accordance with Alabama code 11-45-9 a fine not less than \$50.00 and more than \$500.00 and imprisoned or sentenced to hard labor for a period not to exceed six months for each day of violation



JEFFERSON COUNTY JOB SITE COMPLIANCE FORM



EROSION AND SEDIMENT CONTROL VIOLATION CODES

- 101 NO PERMITS/PLANS FOR ACTIVITY ON PROPERTY
- 102 EROSION CONTROL MEASURES **NOT** INSTALLED PER PLANS*
- 103 EROSION CONTROL MEASURES NEED REPAIRS*
- 104 EROSION CONTROL INADEQUATE **AND/OR** FAILING*
- 105 NO PORTABLE TOILETS WITHIN 3 LOTS
- 106 NO TRASH CONTAINER ON SITE
- 107 TRASH / DEBRIS ON SITE NOT IN TRASH CONTAINER*
- 108 TRASH CONTAINER INADEQUATE **AND/OR** FAILING*
- 109 MATERIALS **AND/OR** CHEMICALS CONTAMINATING WATER*
- 110 CONSTRUCTION ENTRANCE NOT PROPERLY STABILIZED
- 199 OTHER*

ZONING ORDINANCE VIOLATION CODES

- 201 NO PERMITS/PLANS FOR ACTIVITY ON PROPERTY
- 202 NO PERMITS/PLANS FOR ACTIVITY IN FLOODPLAIN
- 203 VIOLATION OF ZONING DISTRICT USE REGULATIONS*
- 204 VIOLATION OF STRUCTURE SETBACKS
- 205 VIOLATION OF SIGN REGULATIONS*
- 206 VIOLATION OF ZONING CASE COVENANTS
- 207 VIOLATION OF BOARD OF ZONING ADJUSTMENTS STIPULATIONS
- 208 VIOLATION OF SUBDIVISION REGULATIONS*
- 209 OTHER*

WEED AND LITTER ORDINANCE VIOLATION CODES

- 301 WEEDS OR GRASS IN EXCESS OF 12" HIGH, **AND/OR** YARD WASTE
- 302 **ONE OR MORE** OF THE FOLLOWING ITEMS; LITTER/GARBAGE/TRASH/RAGS
- 303 JUNK, **AND/OR** DEBRIS, **AND/OR** SALVAGE MATERIALS, DILAPIDATED STRUCTURES
- 304 FURNITURE **AND/OR** APPLIANCES ACCUMULATED ON THE PROPERTY
- 305 TIRES **AND/OR** CAR PARTS BEING STORED ON THE PROPERTY
- 306 INOPERABLE VEHICLES IN EXCESS OF THE ALLOWED **ONE** PER PARCEL
- 399 OTHER*

JEFFERSON COUNTY COMMISSION

MUNICIPAL SEPARATE STORM SEWER SYSTEM

PERMIT NUMBER: ALS000001

APPENDIX D



GENERAL SERVICES BUILDING INVENTORY (FOR MAINTENANCE PURPOSES)

	DEPT.	BUILDING LOCATION	BUILDING NAME	ADDRESS	GROSS SQ. FT.	OWNERSHIP
		REVISED 4/1/2019 js				
1	G.S.	BIRMINGHAM	BIRMINGHAM/JEFFERSON ANIMAL CONTROL	6227 5TH AVE NORTH 35212	15,000	COUNTY/CITY
2	G.S.	BIRMINGHAM	MARTIN ANIMAL CLINIC	6463 1ST AVENUE SOUTH 35212	*2,000	COUNTY
3	G.S.	BIRMINGHAM	JEFFERSON COUNTY COURTHOUSE, ANNEX, BRIDGE & JURY ASSEMBLY	716 RICHARD ARRINGTON JR. BLVD. NORTH 35203	461,000	COUNTY
4	G.S.	BIRMINGHAM	MEL BAILEY CRIMINAL JUSTICE CENTER (CJC)	801 RICHARD ARRINGTON JR. BLVD. NORTH 35203	140,000	COUNTY
5	G.S.	BIRMINGHAM	PUBLIC SAFETY CENTER (JAIL)	809 RICHARD ARRINGTON JR. BLVD. NORTH 35203	225,000	COUNTY
6	SHERIFF	BIRMINGHAM	TOM GLOOR BUILDING (Sheriffs Headquarters)	2200 REV. ABRAHAM WOODS JR. BLVD. 35203	51,500	COUNTY
7	SHERIFF	BIRMINGHAM	DOWNTOWN (8th Ave) SERVICE STATION SHERIFF DEPT.	2420 REV. ABRAHAM WOODS JR. BLVD. 35203	9,000	COUNTY
8	SHERIFF	BIRMINGHAM	SHERIFFS DEPT. FIRING RANGE AND TRAINING ACADEMY	3500 HAPPY HOLLOW ROAD 35068	24,000	COUNTY
9	G.S.	BIRMINGHAM	DOMESTIC RELATIONS COURTHOUSE	2120 7TH AVENUE NORTH 35203	37,000	COUNTY
10	C.G.	BIRMINGHAM	COOPER GREEN HEALTH SERVICES	1515 6th AVENUE SOUTH 35233	400,000	COUNTY/COOPER GREEN
11	C.G.	BIRMINGHAM	WEST END CLINIC	1308 TUSCALOOSA AVE.	21,175	COUNTY/COOPER GREEN
12	G.S.	BIRMINGHAM	FAMILY COURTS BUILDING	120 2nd COURT NORTH 35204	94,000	COUNTY
13	G.S.	BIRMINGHAM	YOUTH DETENTION CENTER	124 2nd COURT NORTH 35204	44,500	COUNTY
14	G.S.	BIRMINGHAM	2121 BUILDING	2121 REV. ABRAHAM WOODS JR. BLVD. 35203	267,048	COUNTY
16	C.D.	BIRMINGHAM	McADORY STORM SHELTER	4400 HARPER ROAD 35020	500	COUNTY
17	REV./SHER.	CENTER POINT	JEFFERSON COUNTY MULTI SERVICES CENTER (CENTERPOINT COURTHOUSE)	2651 CENTER POINT ROAD 35215	20,500	COUNTY
18	REV.	HOOVER	HOOVER COURT SATELLITE	1901 HOOVER COURT 35226	10,460	LEASE
19	G.S.	BESSEMER	BESSEMER COURTHOUSE ANNEX & BRIDGE	1801 3rd AVENUE NORTH 35020	235,000	COUNTY
20	SHERIFF	BESSEMER	BESSEMER PUBLIC SAFETY CENTER (Jail)	1826 2nd AVENUE NORTH 35020	125,000	COUNTY
21	G.S.	BESSEMER	BESSEMER JUSTICE CENTER (BJC)	1851 2nd AVENUE NORTH 35020	156,000	COUNTY
22	SHERIFF	BESSEMER	VIDEO VISITATION -BESS. JAIL	212 19TH STREET NORTH 35021	1,500	COUNTY
23	R&T	BESSEMER	R&T-CAMP BESSEMER COMPLEX	3295 KING STREET 35023	60,000	COUNTY
24	R&T	KETONA	R&T-CAMP KETONA COMPLEX	131 COUNTY SHOP ROAD 35217	71,000	COUNTY
25	G.S.	KETONA	GENERAL SERVICES WAREHOUSE (OLD LAUNDRY)	201 NORTH PINE HILL ROAD 35217	20,000	COUNTY
26	G.S.	TARRANT	GENERAL SERVICES OPERATIONS CENTER	520 MEDCO ROAD 35217	142,000	COUNTY
27	SHERIFF	MOUNT OLIVE	MOUNT OLIVE SUB STATION	3201 MOUNT OLIVE ROAD 35117	1,000	LEASE -SHERIFFS
28	C.D.	MOUNT OLIVE	MOUNT OLIVE COMMUNITY CENTER	2684 MOUNT OLIVE ROAD 35117	4,100	COUNTY
29	SHERIFF	ADGER	OAK GROVE SUB STATION	9120 CAMP OLIVER ROAD	1,200	LEASE-SHERIFFS
30	SH HEIGHTSSP	CAHABA HEIGHTS	CAHABA HEIGHTS SUB STATION	3300 SHADES CREST ROAD 35243	2,600	COUNTY
31	SHERIFF	FORESTDALE	FORESTDALE SUB STATION	301 FOUST COURT 35214	3,300	COUNTY
32	SHERIFF	MCCALLA	MCCALLA SUBSTATION	5977 EASTERN VALLEY RD	2,916	COUNTY

GENERAL SERVICES BUILDING INVENTORY (FOR MAINTENANCE PURPOSES)

	DEPT.	BUILDING LOCATION	BUILDING NAME	ADDRESS	GROSS SQ. FT.	OWNERSHIP
33	G.S./R&T	MORRIS	POTTERS FIELD (JEFFERSON CEMETERY)	BALL PARK DRIVE MORRIS, AL 35116		COUNTY
34	REV.	GARDENDALE	GARDENDALE SATELLITE	651 MAIN STREET, SUITE 127, GARDENDALE 35071	10,925	LEASE
						SUB-TOTAL
		TOWER SITES				
		INFORMATION TECHNOLOGY				
36	I.T.	ADGER	PROVIDENCE TOWER SITE	13689 LOCK 17 ROAD 35006	100	LEASE
37	I.T.	BESSEMER	GILMORE TOWER SITE	9001 TAYLORS FERRY ROAD 35023	100	LAND LEASE-COUNTY BLDG
38	I.T.	BIRMINGHAM	RUFFNER MOUNTAIN TOWER SITE	? 140 RED MOUNTAIN DR. 35206	100	COUNTY
39	I.T.	BIRMINGHAM	OAK MOUNTAIN TOWER SITE	673 CREST ROAD 35242	100	COUNTY
40	I.T.	BIRMINGHAM	WVTM CH 13 TOWER SITE	1732 VALLEY VIEW DR 35209	N/A	LEASED BY BIRMINGHAM
41	I.T.	FAIRFIELD	FAIRFIELD TOWER SITE	4608 COMMERCE AVE 35064	100	COUNTY
42	I.T.	GRAYSVILLE	LINN'S CROSSING TOWER SITE	4939 LINNDALE ROAD 35073		LEASE
43	I.T.	PINSON	PALMERDALE TOWER SITE	5656 CLAY PALMERDALE ROAD 35126	100	LEASE
44	I.T.	UNINCORPORATED JEFF CO / FORESTDALE AREA	FORESTDALE TOWER SITE	2624 SHADDOCK RD. 35214	100	COUNTY
45	I.T.	UNINCORPORATED JEFF CO / McCALLA AREA	ROCK MOUNTAIN TOWER SITE	1150 LAKESIDE DR. 35111	100	COUNTY
46	I.T.	WARRIOR	WARRIOR TOWER SITE	1251 OLD HAYDEN RD 35180	100	COUNTY
47	I.T.	CENTER POINT	CENTERPOINT TOWER SITE			COUNTY
				ADJUSTED BUILDING SQUARE FT TOTAL	2,635,276	SUB-TOTAL
		PARKING DECKS / LOTS				
48	G.S.	PARKING DECK-2121 BUILDING		COUNTY	80,000	
49	G.S.	PARKING DECK-BESSEMER ANNEX		COUNTY	80,000	
50	G.S.	PARKING DECK-BIRMINGHAM (COUNTY DECK)		COUNTY	260,000	
51	G.S.	PARKING DECK-COOPER GREEN		COUNTY	323,000	
52	G.S.	PARKING LOT-2121 BUILDING		COUNTY	5,000	
53	G.S.	PARKING LOT-BJC-SURFACE LOT		COUNTY	54,000	
54	G.S.	PARKING LOT- BIRMINGHAM JAIL (PSC)		COUNTY	14,000	
55	G.S.	PARKING LOT-BIRMINGHAM (PUBLIC SURFACE LOT)		COUNTY	50,000	
56	G.S.	PARKING LOT-FAMILY COURT		COUNTY	157,000	
57	G.S.	PARKING DECK-SECURED, BIRMINGHAM COURTHOUSE		COUNTY	40,600	
58	G.S.	PARKING LOT-SECURED, BESSEMER JUSTICE CENTER		COUNTY	7,500	
59	G.S.	PARKING LOT-SECURED, CJC		COUNTY	11,000	
60	G.S.	PARKING LOT-SECURED, DOMESTIC RELATIONS		COUNTY	5,000	
61	G.S.	PARKING LOT-SECURED, FAMILY COURT		COUNTY	49,000	
				DECK & LOT SQUARE FT. TOTAL	1,136,100	SUB-TOTAL
				GRAND TOTAL SQUARE FOOTAGE	3,771,376	

Work Order # 42670738

Daily Parking Lot and Deck Sweeping

Date Due: May 29, 2019 Equipment: Daily Sweeping
 Assigned To: Kimberlee Ratcliff System: Inspections
 Priority: 1 Make:
 Frequency: Daily Model:
 Property: Jefferson County Courthouse, Annex, Bridge & Jury Asset/Tag #:
 Building: Jefferson County Courthouse, Annex, Bridge & Jury Serial Number:
 Floor: Exterior Building Warranty Expires:
 Suite:

Equipment Details:

Daily Parking Lot and Deck Sweeping

Trade: Building Maintenance Time Estimated: 2 hrs 0 min
 Frequency: Daily

Instructions:

afety Points **WARNING:** There is possible danger of electrical shock or burn whenever working in or around electrical equipment. Turn off and lock out/tag (as applicable) power supply to the equipment before working inside equipment. The proper operation of this equipment is dependent upon the proper handling, operation, and maintenance by qualified personnel. Failure to follow fundamental maintenance requirements could lead to personal injury as well as the failure and loss of the equipment and damage to other property. A qualified person is one who is familiar with the construction and operation of the equipment and the hazards involved. He/she is trained and authorized to de-energize, clear, lock out, and tag circuits and equipment in accordance with established safety practices as applicable. Should a fault occur with the equipment, refer to the appropriate manufacturer's documentation for resolution and any required repairs to the equipment. Anyone performing maintenance on the equipment shall use the following safety equipment as applicable for the maintenance performed: Safety glasses Mask, if needed Job Tools Sweeper

Sweep the curb on the Richard Arrington side	<input type="checkbox"/> Check
Sweep the entire parking lot	<input type="checkbox"/> Check
Sweep the alley way	<input type="checkbox"/> Check
Sweep the parking deck, all floors	<input type="checkbox"/> Check
Sweep the secure parking area	<input type="checkbox"/> Check
Change bags in the sweeper	<input type="checkbox"/> Check

Completed By: _____ **Time Taken:** _____ **Completed On:** _____

WO Completed On: _____

Completion Details: _____

Go Back

Inspection Information

Inspection Schedule [Weekly Property Inspection](#)
Estimated Time **0hr 45m**
Status **Assigned**

Inspection Results

Inspection Result: **0%**
Requires Correction: **0**
Corrective Work Order: **0**
Inspection Tasks Completed: **0/120**
Floors Completed: **0/6**

Location Details

Property: **Domestic Relations Courthouse**
Building: **Domestic Relations Courthouse**
Floors: **Multiple**
Location Details: -

Workflow **Inspection**

General Inspection Note

1st 2nd All Attic **Exterior Building** Grounds

Section #1: Grounds

Task Line

- 1.1 Check sidewalks
- 1.2 Check for trip hazards
- 1.3 Check sidewalk grates to ensure securely fastened

Section #2: Exterior Building

Task Line

- 2.1 Check exterior lighting
- 2.2 Check exterior mats (if applicable)
- 2.3 Check building access doors

Section #3: Roofs

Task Line

- 3.1 Check general condition
- 3.2 Check for debris

Section #4: Interior Building

Task Line

- 4.1 Check walls
- 4.2 Check ceilings (replace stained ceiling tiles if necessary)
- 4.3 Check floors
- 4.4 Checking dusting (create work order for if applicable)
- 4.5 Check for trip hazards

ADEM 30 DAY WALKTHROUGH INSPECTION CHECKLIST LOG FOR YEAR _____

Questions on how to complete this form should be directed to the Groundwater Branch, UST Compliance Section at (334) 270-5655

Facility Name:	Owner:
Address:	Address:
City, County, Zip:	City, State, Zip:
Facility I.D. #:	Phone #:
Inspector Name:	Inspector Phone #:
Inspector Company:	

Instructions

1. Spill prevention equipment at UST systems receiving deliveries at intervals greater than every 30 days may only be checked prior to each delivery.
2. Inspection must be performed in accordance with a nationally recognized code of practice (such as PEI RP-900, or equivalent), manufacturer's instructions, or ADEM requirements.
3. Keep a record copy of this inspection for 1 year.

Month of Inspection	Jan	Feb	Mar	Apr	May	Jun	Jul	Aug	Sep	Oct	Nov	Dec
Day of inspection												

Spill Containment Equipment (Spill Bucket) Inspection

Visually checked spill prevention equipment for damage?	<input type="checkbox"/> yes <input type="checkbox"/> no	<input type="checkbox"/> yes <input type="checkbox"/> no	<input type="checkbox"/> yes <input type="checkbox"/> no	<input type="checkbox"/> yes <input type="checkbox"/> no	<input type="checkbox"/> yes <input type="checkbox"/> no	<input type="checkbox"/> yes <input type="checkbox"/> no	<input type="checkbox"/> yes <input type="checkbox"/> no	<input type="checkbox"/> yes <input type="checkbox"/> no	<input type="checkbox"/> yes <input type="checkbox"/> no	<input type="checkbox"/> yes <input type="checkbox"/> no	<input type="checkbox"/> yes <input type="checkbox"/> no	<input type="checkbox"/> yes <input type="checkbox"/> no
Integrity of both walls of a double walled spill prevention equipment verified by checking the interstitial space for leaks?	<input type="checkbox"/> yes <input type="checkbox"/> no <input type="checkbox"/> n/a	<input type="checkbox"/> yes <input type="checkbox"/> no <input type="checkbox"/> n/a	<input type="checkbox"/> yes <input type="checkbox"/> no <input type="checkbox"/> n/a	<input type="checkbox"/> yes <input type="checkbox"/> no <input type="checkbox"/> n/a	<input type="checkbox"/> yes <input type="checkbox"/> no <input type="checkbox"/> n/a	<input type="checkbox"/> yes <input type="checkbox"/> no <input type="checkbox"/> n/a	<input type="checkbox"/> yes <input type="checkbox"/> no <input type="checkbox"/> n/a	<input type="checkbox"/> yes <input type="checkbox"/> no <input type="checkbox"/> n/a	<input type="checkbox"/> yes <input type="checkbox"/> no <input type="checkbox"/> n/a	<input type="checkbox"/> yes <input type="checkbox"/> no <input type="checkbox"/> n/a	<input type="checkbox"/> yes <input type="checkbox"/> no <input type="checkbox"/> n/a	<input type="checkbox"/> yes <input type="checkbox"/> no <input type="checkbox"/> n/a
Water, fuel and/or debris found in spill prevention equipment?	<input type="checkbox"/> yes <input type="checkbox"/> no	<input type="checkbox"/> yes <input type="checkbox"/> no	<input type="checkbox"/> yes <input type="checkbox"/> no	<input type="checkbox"/> yes <input type="checkbox"/> no	<input type="checkbox"/> yes <input type="checkbox"/> no	<input type="checkbox"/> yes <input type="checkbox"/> no	<input type="checkbox"/> yes <input type="checkbox"/> no	<input type="checkbox"/> yes <input type="checkbox"/> no	<input type="checkbox"/> yes <input type="checkbox"/> no	<input type="checkbox"/> yes <input type="checkbox"/> no	<input type="checkbox"/> yes <input type="checkbox"/> no	<input type="checkbox"/> yes <input type="checkbox"/> no
Water, fuel and/or debris removed from spill prevention equipment and disposed of properly?	<input type="checkbox"/> yes <input type="checkbox"/> no <input type="checkbox"/> n/a	<input type="checkbox"/> yes <input type="checkbox"/> no <input type="checkbox"/> n/a	<input type="checkbox"/> yes <input type="checkbox"/> no <input type="checkbox"/> n/a	<input type="checkbox"/> yes <input type="checkbox"/> no <input type="checkbox"/> n/a	<input type="checkbox"/> yes <input type="checkbox"/> no <input type="checkbox"/> n/a	<input type="checkbox"/> yes <input type="checkbox"/> no <input type="checkbox"/> n/a	<input type="checkbox"/> yes <input type="checkbox"/> no <input type="checkbox"/> n/a	<input type="checkbox"/> yes <input type="checkbox"/> no <input type="checkbox"/> n/a	<input type="checkbox"/> yes <input type="checkbox"/> no <input type="checkbox"/> n/a	<input type="checkbox"/> yes <input type="checkbox"/> no <input type="checkbox"/> n/a	<input type="checkbox"/> yes <input type="checkbox"/> no <input type="checkbox"/> n/a	<input type="checkbox"/> yes <input type="checkbox"/> no <input type="checkbox"/> n/a
Check for obstructions in the fill pipe?	<input type="checkbox"/> yes <input type="checkbox"/> no	<input type="checkbox"/> yes <input type="checkbox"/> no	<input type="checkbox"/> yes <input type="checkbox"/> no	<input type="checkbox"/> yes <input type="checkbox"/> no	<input type="checkbox"/> yes <input type="checkbox"/> no	<input type="checkbox"/> yes <input type="checkbox"/> no	<input type="checkbox"/> yes <input type="checkbox"/> no	<input type="checkbox"/> yes <input type="checkbox"/> no	<input type="checkbox"/> yes <input type="checkbox"/> no	<input type="checkbox"/> yes <input type="checkbox"/> no	<input type="checkbox"/> yes <input type="checkbox"/> no	<input type="checkbox"/> yes <input type="checkbox"/> no
Check fill cap to ensure it fits securely on fill pipe?	<input type="checkbox"/> yes <input type="checkbox"/> no	<input type="checkbox"/> yes <input type="checkbox"/> no	<input type="checkbox"/> yes <input type="checkbox"/> no	<input type="checkbox"/> yes <input type="checkbox"/> no	<input type="checkbox"/> yes <input type="checkbox"/> no	<input type="checkbox"/> yes <input type="checkbox"/> no	<input type="checkbox"/> yes <input type="checkbox"/> no	<input type="checkbox"/> yes <input type="checkbox"/> no	<input type="checkbox"/> yes <input type="checkbox"/> no	<input type="checkbox"/> yes <input type="checkbox"/> no	<input type="checkbox"/> yes <input type="checkbox"/> no	<input type="checkbox"/> yes <input type="checkbox"/> no
Inspector's initials												

Release Detection Equipment Inspection

Release detection operating with no alarms or unusual operating conditions?	<input type="checkbox"/> yes <input type="checkbox"/> no	<input type="checkbox"/> yes <input type="checkbox"/> no	<input type="checkbox"/> yes <input type="checkbox"/> no	<input type="checkbox"/> yes <input type="checkbox"/> no	<input type="checkbox"/> yes <input type="checkbox"/> no	<input type="checkbox"/> yes <input type="checkbox"/> no	<input type="checkbox"/> yes <input type="checkbox"/> no	<input type="checkbox"/> yes <input type="checkbox"/> no	<input type="checkbox"/> yes <input type="checkbox"/> no	<input type="checkbox"/> yes <input type="checkbox"/> no	<input type="checkbox"/> yes <input type="checkbox"/> no	<input type="checkbox"/> yes <input type="checkbox"/> no
Reviewed release detection testing records to ensure they are passing and current?	<input type="checkbox"/> yes <input type="checkbox"/> no	<input type="checkbox"/> yes <input type="checkbox"/> no	<input type="checkbox"/> yes <input type="checkbox"/> no	<input type="checkbox"/> yes <input type="checkbox"/> no	<input type="checkbox"/> yes <input type="checkbox"/> no	<input type="checkbox"/> yes <input type="checkbox"/> no	<input type="checkbox"/> yes <input type="checkbox"/> no	<input type="checkbox"/> yes <input type="checkbox"/> no	<input type="checkbox"/> yes <input type="checkbox"/> no	<input type="checkbox"/> yes <input type="checkbox"/> no	<input type="checkbox"/> yes <input type="checkbox"/> no	<input type="checkbox"/> yes <input type="checkbox"/> no
Inspector's initials												

Repairs Needed	Date of Repair	Description of any Repairs

JEFFERSON COUNTY COMMISSION

MUNICIPAL SEPARATE STORM SEWER SYSTEM

PERMIT NUMBER: ALS000001

APPENDIX E



Uniform Hazmat Response Guidelines

May 15, 2018



**Jefferson County
Emergency Management Agency
709 North 19th Street
Birmingham, Alabama 35203**

Contents

1 Introduction 3
1.1 Hazardous Operations Teams 3
2 Purpose..... 3
3 Organization..... 3
3.1 Hazmat Branch or Division..... 3
3.2 Hazmat Officer 3
3.3 Key Hazmat Personnel 4
3.4 Organization Chart..... 4
4 Responsibilities 5
4.1 Jefferson County Emergency Management Agency 5
4.2 Hazmat Teams in Jefferson County 5
4.3 Dispatch Stations 6
5 Training 6
5.1 NFPA Training Guidelines..... 6
5.2 Hazmat Team Training 6
5.3 Training for Uniform Hazmat Response Guidelines 6
5.4 NFPA Training Summary Table 7
6 Management Tools 9
6.1 Hazmat Officer’s Response Guide 9
6.1.1 Reporting Hazardous Materials Releases 10
6.2 Hazmat Command Kit..... 10
6.2.1 Kit Components..... 11
6.2.1.1 Vests 11
6.2.1.2 Clipboards 11
6.2.1.3 Task Cards..... 11
6.2.1.4 Dry Erase Whiteboard..... 11
7 Site Layout Diagram..... 12
8 Decon Corridor Layout Diagram..... 13

1 Introduction

Several jurisdictions in Jefferson County have independent hazmat response teams. Although these Hazmat teams follow general guidelines for hazmat response, there is no standard approach to managing a hazardous materials incident. Hazmat teams have different organizations and equipment, which adds to confusion when multiple Hazmat teams attempt to work together. As a result, Jefferson County Emergency Management Agency is publishing Uniform Hazmat Response Guidelines to help standardize Hazmat response.

These Uniform Hazmat Response Guidelines include this document and response management tools for Incident Commanders, Hazmat Officers and Hazmat team members in Jefferson County.

1.1 Hazardous Operations Teams

Birmingham Fire & Rescue (2 teams)
Trussville Fire Department
Hoover Fire Department
Bessemer Fire Department
Forestdale Fire Department
Homewood Fire Department
Vestavia Hills Fire Department

2 Purpose

The purpose of the Jefferson County Emergency Management Agency's Uniform Hazmat Response Guidelines is to standardize the incident management system of hazmat teams, so that they can reinforce each other during a Hazmat incident.

3 Organization

3.1 Hazmat Branch or Division

Jefferson County Hazmat teams will respond to Hazmat incidents as an ICS Branch or Division, depending on the incident situation and will report to the Incident Operations Section Chief.

3.2 Hazmat Officer

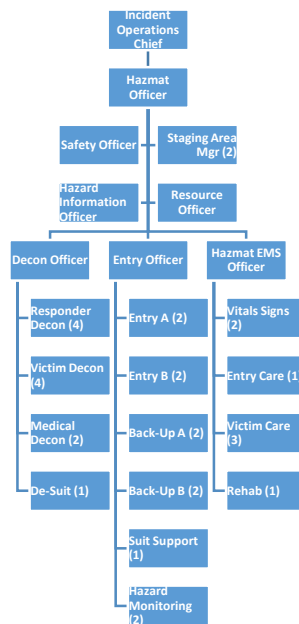
The Hazmat Officer will organize and supervise the responding hazmat team which will include a small staff of assistants, as needed and three primary operating teams: Decon, Entry and Hazmat EMS.

3.3 Key Hazmat Personnel

A one-sentence job description for each key Hazmat personnel is described on the first page of the corresponding job clipboard.

3.4 Organization Chart

The Organization Chart below shows how Jefferson County Hazmat teams will organize in the field. Key Hazmat personnel will wear orange vests.



4 Responsibilities

4.1 Jefferson County Emergency Management Agency

Jefferson County Emergency Management Agency has overall responsibility for the Uniform Hazmat Response Guidelines including the following:

- 1) Update, publish and distribute the Uniform Hazmat Response Guidelines to Jefferson County Hazmat teams.
- 2) Update, publish and distribute the Uniform Hazmat Response Guidelines training CDs to county Hazmat teams.
- 3) Install and update Uniform Hazmat Response Guidelines reference cards and resource lists at Jefferson County Dispatch.
- 4) Update Hazmat Command Kit as needed.
- 5) Hold annual meeting of Hazmat team officers in Jefferson County to review Uniform Hazmat Response Guidelines.
- 6) Respond to incidents involving hazardous materials in Jefferson County.

4.2 Hazmat Teams in Jefferson County

Each Hazmat team in Jefferson County will continue to train for Hazmat response and will add the following:

- 1) Introduce Hazmat team members to the Jefferson County Uniform Hazmat Response Guidelines.
- 2) Instruct Hazmat team members to view Uniform Hazmat Response Guidelines training CDs.
- 3) Become familiar with the Hazmat Clipboards and all contents contained.
- 4) Participate in training exercises whenever possible.

4.3 Dispatch Stations

Each hazardous materials team's dispatch center will perform the following:

- 1) Become trained on and follow the Jefferson County Uniform Hazmat Response Guidelines.
- 2) Make Jefferson County Uniform Hazmat Response Guidelines and Hazmat resource contact lists available to each dispatch staff duty station.
- 3) Contact Jefferson County EMA Duty Officer.

5 Training

5.1 NFPA Training Guidelines

The Jefferson County Uniform Hazmat Response Guidelines will follow the training recommendations outlined in the latest editions of the National Fire Protection Association (NFPA) 472 Standard for Professional Competence of Responder to Hazardous Materials Incidents and the NFPA 473 Standard for Competencies for EMS Personnel Responding to Hazardous Materials Incidents.

5.2 Hazmat Team Training

Individual Hazmat teams in Jefferson County remain responsible for technical training of the Hazmat team members. These Uniform Hazmat Response Guidelines will supplement Hazmat individual and team training in the incident management system.

5.3 Training for Uniform Hazmat Response Guidelines

Training on the Jefferson County Uniform Hazmat Response Guidelines is contained in Microsoft PowerPoint presentations on computer compact disc (CD). The training CD has two training modules: 1) Description of reference cards used by incident commanders and Hazmat officers and of the Hazmat Command Kit and 2) Demonstration of how to use the Jefferson County Response Guidelines and management tools in the field.

The Jefferson County SOP Training CDs are intended to familiarize county Hazmat teams with the Jefferson County Uniform Hazmat Response Guidelines.

Jefferson County Uniform Hazmat Response Guidelines

5.4 NFPA Training Summary Table

The following table summarizes the NFPA training requirements for Jefferson County Hazmat teams by Hazmat function.

Hazmat Module	Staff Needed	Zone at Scene	Scene Activities	PPE Level	Equipment to Bring	NFPA Competencies
First Responder	x	Cold	Detect hazard, isolate scene, assist Hazmat Operations in Cold Zone (Staging Area Manager, PIO).	C or D	None	First Responder at the Awareness Level
Information Officer	1	Cold	Identify Hazards	D	None	Hazardous Materials Technician
Branch Director, Level III Hazmat	1	Cold	Manage Hazmat Team.	D	Hazmat Command Kit	Incident Commander
Branch Director	1	Cold	Manage Hazmat Team.	D	Hazmat Command Kit	Hazardous Materials Branch Officer
Decon Team	2	Warm	1) Decontaminate Responders or victims; 2) De-suit.	B	Decon corridor supplies and equipment.	First Responder at the Operational Level
Decon Group Supervisor	1	Warm	Organize and supervise Decon operations.	D	None	First Responder at the Operational Level
Hazmat Safety Officer	1	Warm	Enforce safety at scene.	C	None	Hazardous Materials Branch Safety Officer
Hazmat EMS Group Supervisor	1	Warm	Organize and supervise Hazmat EMS operations.	D	None	EMS/HM Level II Responders
COLD EMS Team	2	Cold	1) Care for and prepare victims for transport in the Cold Zone; 2) Monitor and track vital signs of responders in PPE; 3) Entry Team Care; 4) Rehab.	D	EMS medical supplies	EMS/HM Level I Responders
WARM EMS Team	2	Warm	1) Care for victims in the Warm Zone; 2) Medical Decon.	B	EMS medical supplies.	EMS/HM Level II Responders
Entry Team (no specialty)	2	Hot	1) Rescue victims in Hot Zone; 2) Suit support.	A	1) Litter; 2) Detection equipment.	Hazardous Materials Technician
Entry Group Supervisor	1	Warm	Organize and supervise Entry Teams.	D	None	Hazardous Materials Technician
Back-Up Team	2	Hot	Ready to rescue Entry Team.	A	Litter.	Hazardous Materials Technician

Jefferson County Uniform Hazmat Response Guidelines

Hazmat Module	Staff Needed	Zone at Scene	Scene Activities	PPE Level	Equipment to Bring	NFPA Competencies
Monitoring Team	2	Warm	Monitor scene for hazards.	C	Monitoring Equipment.	Hazardous Materials Technician
Entry Team (tank car specialty)	2	Hot	Provide oversight for product removal and movement of damaged tank cars	A	Special tools.	Technician with a Tank Car Specialty
Entry Team (cargo tank specialty)	2	Hot	Provide oversight for product removal and movement of damaged tank cars	A	Special tools.	Technician with a Cargo Tank Specialty
Entry Team (intermodal tank specialty)	2	Hot	Provide oversight for product removal and movement of damaged tank cars	A	Special tools.	Technician with an Intermodal Tank Specialty

6 Management Tools

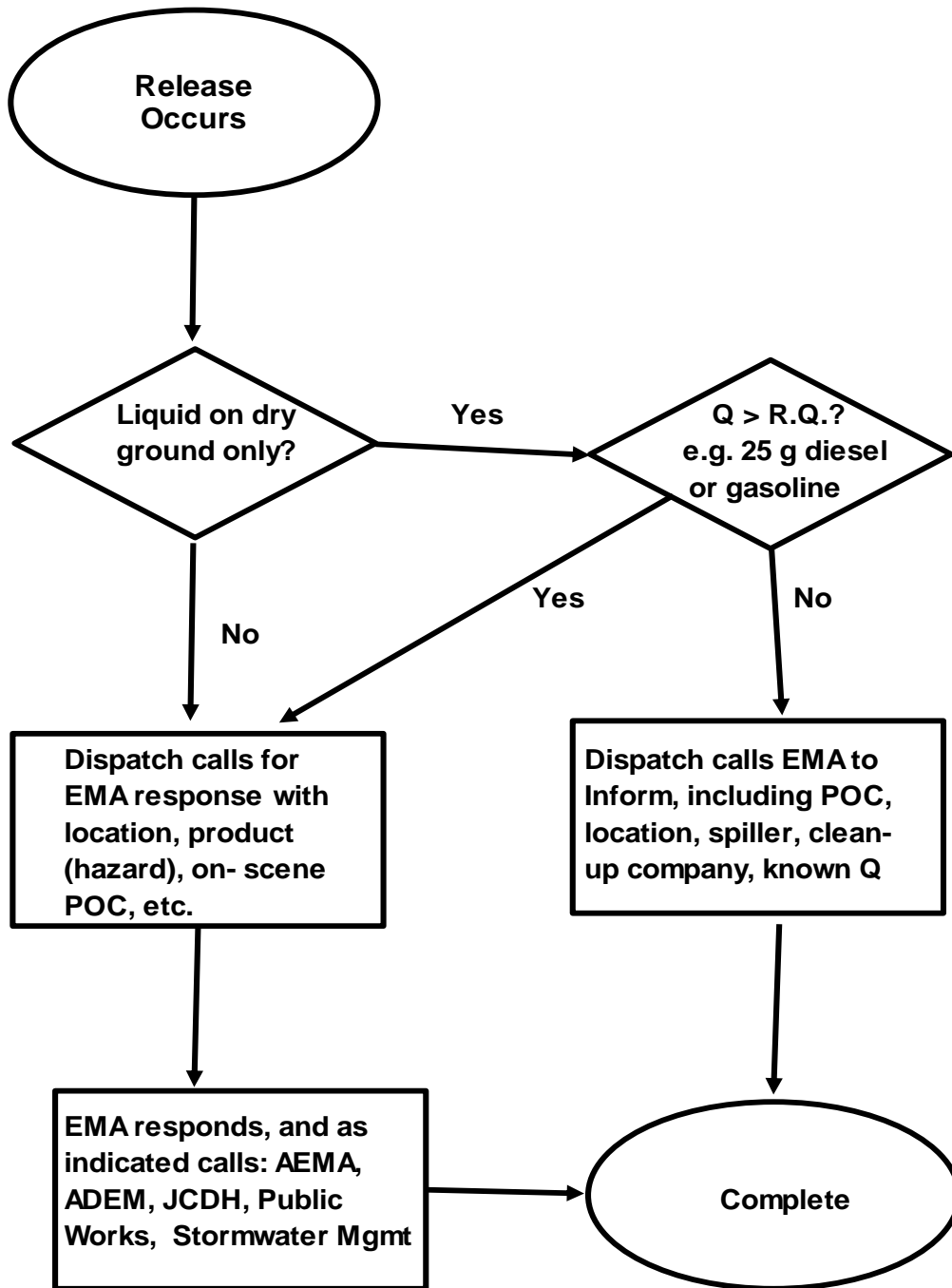
The Jefferson County Uniform Hazmat Response Guidelines include management tools to help incident commanders, Hazmat officers and Hazmat team members work together in the field. Tools include an Incident Commander's Hazmat Dispatch Options Card, Hazmat Officer's Response Guide and a Hazmat Command Kit.

6.1 Hazmat Officer's Response Guide

Hazmat Officers in Jefferson County will refer to the following Hazmat Officer's Response Guide in determining the Hazmat level of response. Jefferson County will classify Hazmat incidents into three levels as shown on the Response Guide below:

LEVEL	I	II	III
Evacuation	None	Local	Large Area
Substance	Fuel liquid or gas	Non-fuel	Non-fuel
Toxicity	Low	Moderate	Moderate - High
PPE Needed	Struc fire fight gear	Level B or high temp	Level A, B or high temp
Quan, Fuel Liquids	< or = 100 gal	> 100 gal	> 100 gal
Quan, Non-Fuel Liquids	Depends on substance	Depends on substance	Extreme Haz Subst (EHS)
Environmental Impact	None	Yes	Yes
Damage, Container < or = 100 psi	Minor	OK to handle, transfer	Total struc failure possible
Damage, Container > 100 psi	Stressed , possible valve or vent release	OK to handle , transfer	Total failure possible
Release Control	First Responders	Special Resources Needed	Special Resources Needed
Life Threatening Explosions?	None or Remote	Possible	Probable
Notifications	JC EMA	Haz Tm, JC EMA, LEPC	Haz Tm, JC EMA, LEPC
Activation, Hazmat	None	Partial	Full
Assistance from Hazmat	Advice , air monitoring	Partial	Full
Command	Local Gov't	Local Gov't	Haz Tm (ST or FED assists)
Billing	No	Possible	Yes
EXAMPLES	A tractor trailer, diesel fuel release from saddle tank.	A gasoline tanker roll-over, product release. A leaking hydrochloric (muriatic) acid 55-gal drum.	A gasoline tanker roll-over and fire. An acid tanker, product release. A 5-gal pesticide drum, roadway spill. A structural fire with pesticides.

6.1.1 Reporting Hazardous Materials Releases



6.2 Hazmat Command Kit

Hazmat Officers will use a Hazmat Command Kit to organize and manage Hazmat resources at an incident. The components of the Hazmat Command Kit are designed to quickly deploy personnel and equipment resources at the Hazmat scene.

6.2.1 Kit Components

The Hazmat Command Kit includes a hanging-file box for storing the following components: Vests and Clipboards for key personnel, Task Cards for critical tasks and a Dry Erase Whiteboard for visually communicating the Hazmat site plan.

6.2.1.1 Vests

Seven members of the Hazmat team will wear orange vests for identification:

- | | |
|--------------------------------|-----------------------|
| 1) Hazmat Officer | 5) Decon Officer |
| 2) Hazmat Safety Officer | 6) Entry Officer |
| 3) Information Officer | 7) Hazmat EMS Officer |
| 4) Hazmat Staging Area Manager | |

Vests are folded and stored with clipboards in the hanging files of the Hazmat Command Kit box.

6.2.1.2 Clipboards

Clipboards are used to assign key hazmat positions and to assemble needed checklists and forms. A laminated Site Layout Diagram or Decon Corridor Layout Diagram, each with an organization chart upside down on the reverse side, acts as a cover sheet to protect the pages attached to the clipboard.

6.2.1.3 Task Cards

The Hazmat Branch Officer will assign Task Cards to Hazmat assistants to initiate and track critical administrative and operational tasks. Hazmat assistants may include responders at a Hazmat incident who lack Hazmat training or who are unassigned.

Task cards are stored in a small accordion file folder, which can be opened and flared to reveal all task card titles at a glance. The task cards become part of the Hazmat incident record. A new deck of task cards is used for each new Hazmat incident.

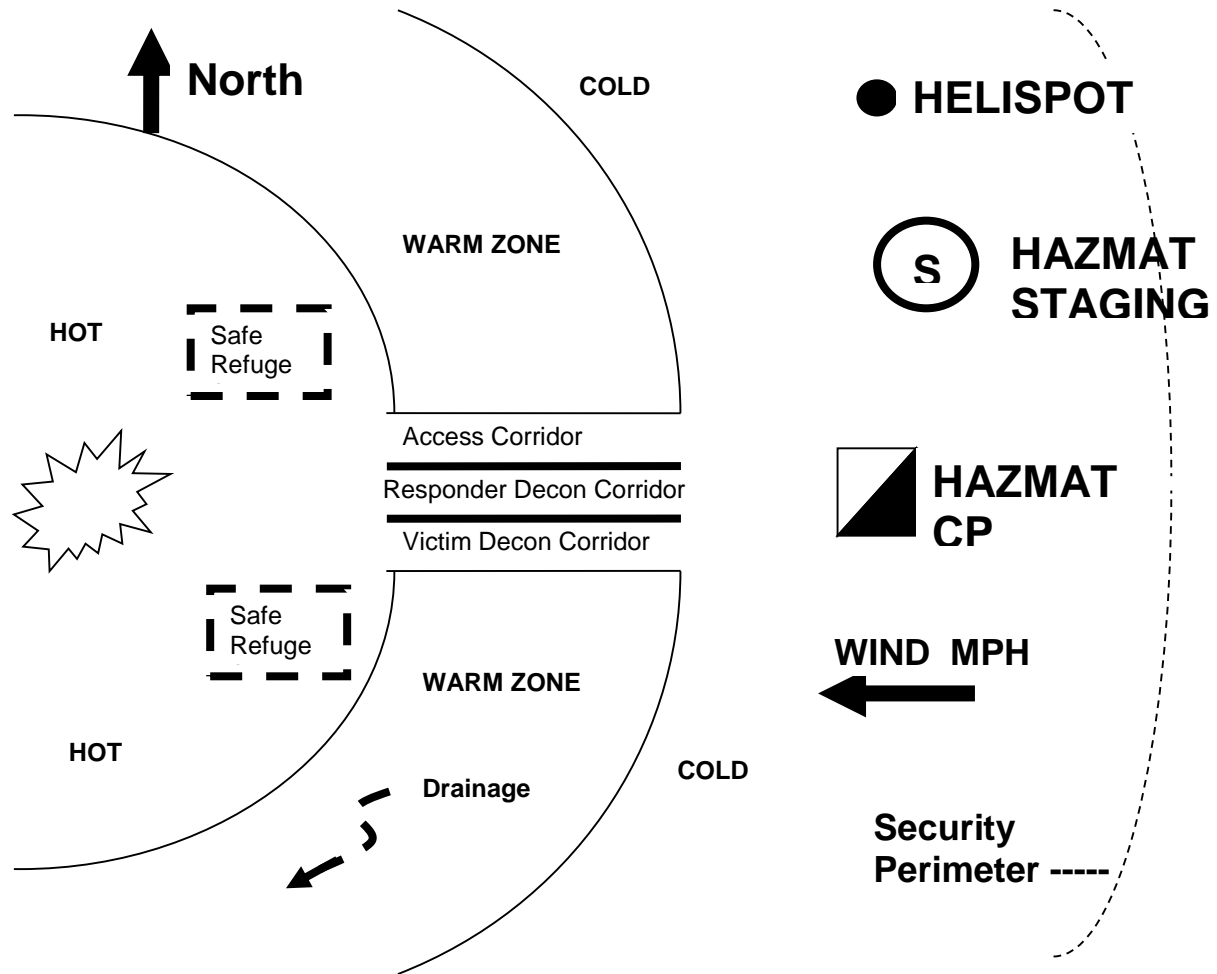
6.2.1.4 Dry Erase Whiteboard

The Hazmat Branch Director will use the dry erase whiteboard to visually communicate the deployment of Hazmat resources at the site. A sample of a Site Layout Diagram is attached to the dry erase whiteboard for reference.

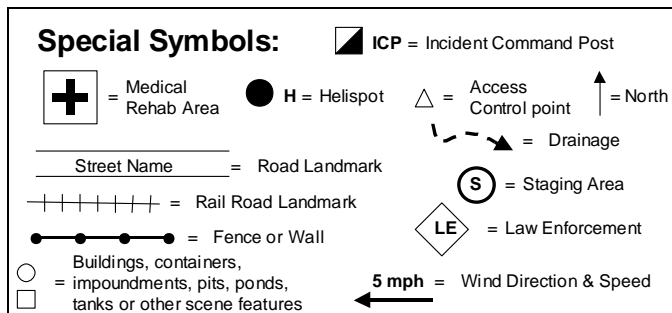
The Dry Erase Whiteboard is stored on top of the hanging files in the Hazmat Command Kit box.

7 Site Layout Diagram

Hazmat Officers will organize the Hazmat site according to the following Site Layout Diagram and Special Symbols:

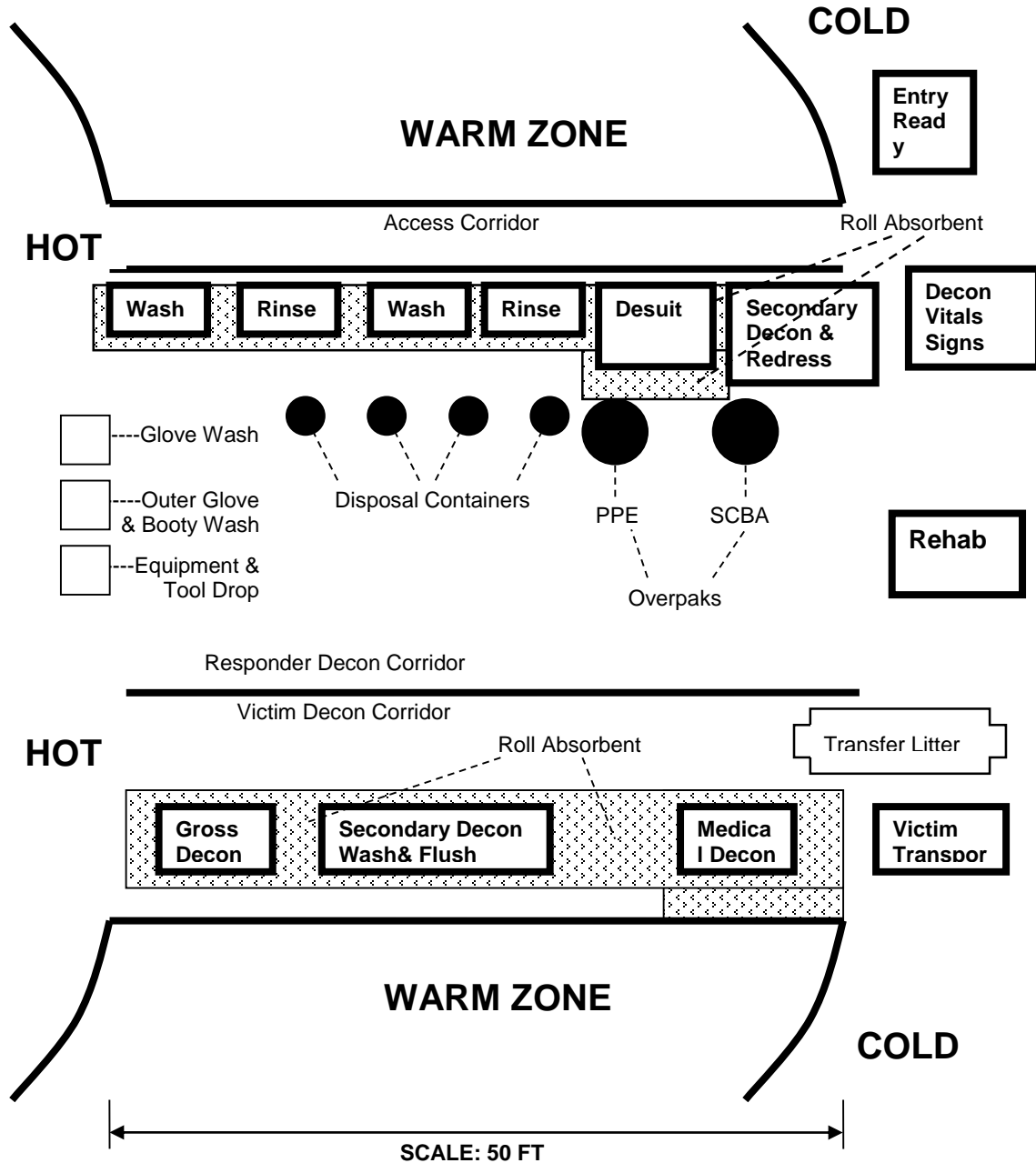


Jefferson County Uniformed Hazmat Guide



8 Decon Corridor Layout Diagram

Hazmat Officers will organize decontamination operations into three decontamination corridors at the Hazmat site, according to the following Decon Corridor Layout Diagram:



Jefferson County Uniformed Hazmat Guide

The Decon Officer will orient arriving Hazmat team members by placing two traffic cones to indicate the entry width of the three decontamination corridors.

Waste Disposal

Obtain curbside garbage pickup, recycling, schedule large item pickup
Advanced Disposal 640-7000
(The contract for curbside waste disposal in unincorporated Jefferson
County is managed by Environmental Services Dept. 325-5496)
Used household cooking oil and grease recycling locations
Environmental Services Dept. 238-3876
Recycling drop off centers (call for hours of operation)
Birmingham Recycling and Recovery 591-8201
UAB Recycling Center 996-9043
Bessemer Recycling Center 425-0068

Jefferson County Landfills

Residents transporting material to these sites must cover their loads to prevent trash from blowing onto roadways.

Mt. Olive Landfill 631-8258
101 Barber Blvd, Gardendale, AL 35071
Hours: Residential Convenience Center M-F 7am-5pm, Sat 7am-12pm
Cost \$12.00 for the first 400 pounds; \$33.70 per ton after

Turkey Creek Landfill 681-6307
7035 Narrows Road, Pinson, AL 35126
Hours: Monday, Wednesday, Friday 7am-3pm, Saturday 7am-12pm
Cost: \$12.00 per load (pickup truck or car only)

Johns Transfer Station 426-5444
5125 Bessemer Johns Road, Bessemer, AL 35023
Hours: Monday-Friday 7am-4pm, Saturday 7am-12pm
Cost: \$12.00 for the first 500 pounds, \$35.25 per ton thereafter

Peabody Convenience Center 497-0318
11510 Lock 17 Road, Bessemer, AL 35023
Hours: Tue-Fri 7am-5pm
Cost: \$8.50/ (pickup truck or car only)

In addition to the services listed in this publication, Jefferson County implements many other functions, including administering/enforcing state laws through law enforcement and the court system, collecting taxes, assessing property, zoning, construction permitting, recording public documents, conducting elections, issuing licenses, and implementing a stormwater program. For more information:

www.jccal.org

Helpful Information

For Jefferson County Residents



Development Services Department

Room B-200
716 Richard Arrington Jr Blvd N
Birmingham AL 35203
205-325-5321

Helpful Information for Jefferson County Residents

Jefferson County provides many services to its residents in order to protect health and safety, promote economic development, and comply with state laws. Some of the services included in this publication may only apply to residents of unincorporated Jefferson County. If you live within a municipality, please contact your city or town for information about services available to you.

Environmental

Report suspected water pollution (odd color, smell, oily sheen, unusual appearance) in a creek or other waterway; report anything dumped or poured into a storm drain, rainwater drainage ditch, or waterway

Development Services Dept. 325-5792

Report a sanitary sewer emergency if sewage is backing up in your home or overflowing from a manhole

Environmental Services Dept. 942-0681

Report illegal dumping of trash, construction materials, household goods, or other items

Development Services Dept. 582-6555

Report an overgrown or abandoned property

Development Services Dept. 325-5321

Report a business being operated in a residential area, or a construction site that is not properly permitted

Development Services Dept. 325-5638

Properly dispose of household hazardous waste such as weed and bug killer, cleaning products, paint, aerosols, electronics, batteries

Development Services Dept. 325-8741

Coordinate or participate in a volunteer roadside litter cleanup

Development Services Dept. 325-8741

Roads

Report potholes, road debris, trees down on roads, sight distance concerns such as mowing, litter along Jefferson County roadways

Roads and Transportation Dept. (main number) 325-5141

24 HR Bessemer Camp (western and southern areas) 481-4228

24 HR Ketona Camp (eastern and northern areas) 849-2321

Report concerns with contractor on or adjacent to roadway 849-2315

Report missing/damaged street signs, traffic signals, striping concerns
849-2341 or 849-2336

Health and Safety

Sheriff's Office

Emergency 911

Sheriff's Office Call for Service 325-1450

Sheriff's Office Directory 325-5900

Report stray dogs

Greater Birmingham Humane Society 591-6522

Report infestations of insects and rodents; excessive animal waste; plumbing deficiencies

Jefferson County Dept. of Health 930-1230

Report dead animals in the road, other wildlife issues

Greater Birmingham Humane Society 591-6522

Sheriff's Office Call for Service 325-1450

Report an abandoned vehicle

Sheriff's Office Call for Service 325-1450

Health and wellness services

Jefferson County Dept. of Health 933-9110

Cooper Green Mercy Health Services 930-3200

Utilities

Power turn on, turn off, outage, street light outage, customer service

Alabama Power 800-888-2726

Bessemer Utilities 481-4333

Natural gas turn on, turn off, customer service

Spire 800-292-4008

Graysville Gas & Water Board 674-5643 x2

Trussville Utilities Board 655-3211

Water turn on, turn off, customer service

Birmingham Water Works 244-4000

Bessemer Utilities 481-4333

Graysville Gas & Water Board 674-5643 X2

Irondale Water System 951-1410

Leeds Water Works Board 699-5151

Trussville Utilities Board 655-3211

Warrior River Water Authority 491-7721

Community Services

Low/moderate income housing, community storm shelters, workforce development, senior citizen services

Community Services and Workforce Development Dept. 325-5761

Online reporting: JCCAL.org, click 'How Do I', click 'Report a Problem'